



ELECTRONIC COPY

LG772686448
Report verification at igi.org



February 7, 2026
IGI Report Number **LG772686448**

Description **LABORATORY GROWN DIAMOND**

Shape and Cutting Style **OPTICA STELO (ROUND MODIFIED BRILLIANT)**

Measurements **10.90 - 10.95 X 6.80 MM**

GRADING RESULTS

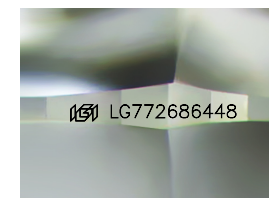
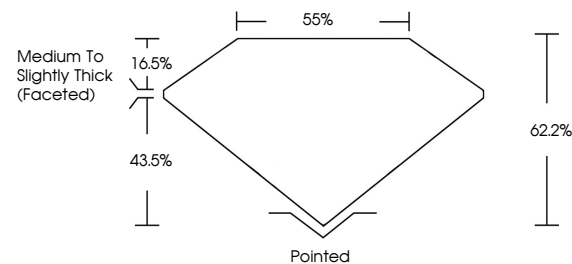
Carat Weight **4.95 CARATS**

Color Grade **E**

Clarity Grade **VS 1**

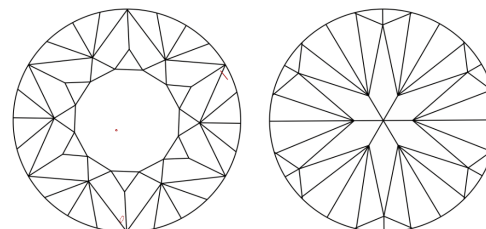
Cut Grade **EXCELLENT**

PROPORTIONS



Sample Image Used

CLARITY CHARACTERISTICS



KEY TO SYMBOLS

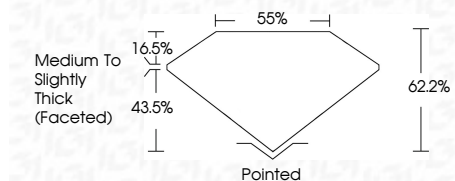
Red symbols indicate internal characteristics.
Green symbols indicate external characteristics.

COLOR

D E F G H I J Faint Very Light Light

CLARITY

FL	IF	VS ¹⁻²	VS ¹⁻²	SI ¹⁻²	I ¹⁻³
Flawless	Internally Flawless	Very Very Slightly Included	Very Slightly Included	Slightly Included	Included



ADDITIONAL GRADING INFORMATION

Polish **EXCELLENT**

Symmetry **EXCELLENT**

Fluorescence **NONE**

Inscription(s) **(IGI) LG772686448**

Comments: This Laboratory Grown Diamond was created by Chemical Vapor Deposition (CVD) growth process. Type IIa

February 7, 2026

IGI Report Number **LG772686448**

Description **LABORATORY GROWN DIAMOND**

Shape and Cutting Style **OPTICA STELO (ROUND MODIFIED BRILLIANT)**

Measurements **10.90 - 10.95 X 6.80 MM**

GRADING RESULTS

Carat Weight **4.95 CARATS**

Color Grade **E**

Clarity Grade **VS 1**

Cut Grade **EXCELLENT**

ADDITIONAL GRADING INFORMATION

Polish **EXCELLENT**

Symmetry **EXCELLENT**

Fluorescence **NONE**

Inscription(s) **(IGI) LG772686448**

Comments: This Laboratory Grown Diamond was created by Chemical Vapor Deposition (CVD) growth process. Type IIa



February 7, 2026
IGI Report No LG772686448
OPTICA STELO (ROUND MODIFIED BRILLIANT)
10.90 - 10.95 X 6.80 MM
4.95 CARATS
E
VS 1
EXCELLENT
62.2%
55%
Medium To Slightly Thick (Faceted)
Pointed
EXCELLENT
EXCELLENT
NONE
IGI LG772686448
Inscription(s)
Comments: This Laboratory Grown Diamond was created by Chemical Vapor Deposition (CVD) growth process. Type IIa