



ELECTRONIC COPY

LG772683002
Report verification at igi.org



February 12, 2026
IGI Report Number **LG772683002**
Description **LABORATORY GROWN DIAMOND**
Shape and Cutting Style **CUSHION MODIFIED BRILLIANT**
Measurements **14.81 X 11.27 X 7.02 MM**
GRADING RESULTS
Carat Weight **11.10 CARATS**
Color Grade **FANCY VIVID BROWNISH PINK**
Clarity Grade **SI 1**

February 12, 2026
IGI Report Number **LG772683002**
Description **LABORATORY GROWN DIAMOND**
Shape and Cutting Style **CUSHION MODIFIED BRILLIANT**
Measurements **14.81 X 11.27 X 7.02 MM**

GRADING RESULTS

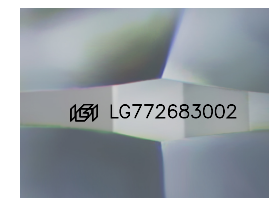
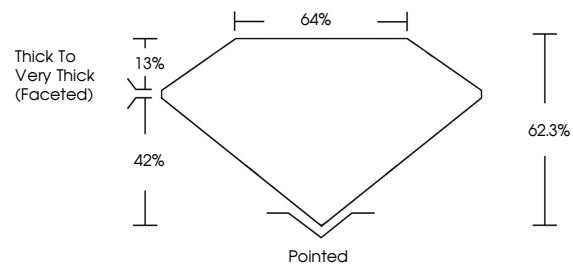
Carat Weight **11.10 CARATS**
Color Grade **FANCY VIVID BROWNISH PINK**
Clarity Grade **SI 1**

ADDITIONAL GRADING INFORMATION

Polish **EXCELLENT**
Symmetry **EXCELLENT**
Fluorescence **STRONG**
Inscription(s) **LG772683002**

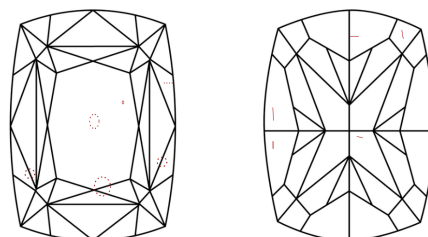
Comments: This Laboratory Grown Diamond was created by Chemical Vapor Deposition (CVD) growth process.
Indications of post-growth treatment.

PROPORTIONS



Sample Image Used

CLARITY CHARACTERISTICS



KEY TO SYMBOLS

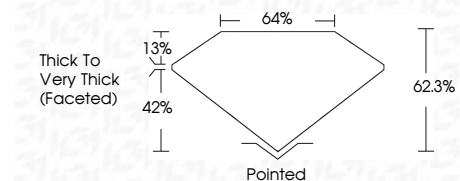
Red symbols indicate internal characteristics.
Green symbols indicate external characteristics.

COLOR

D E F G H I J Faint Very Light Light

CLARITY

FL	IF	VS ¹⁻²	VS ¹⁻²	SI ¹⁻²	I ¹⁻³
Flawless	Internally Flawless	Very Very Slightly Included	Very Slightly Included	Slightly Included	Included



ADDITIONAL GRADING INFORMATION

Polish **EXCELLENT**
Symmetry **EXCELLENT**
Fluorescence **STRONG**
Inscription(s) **LG772683002**
Comments: This Laboratory Grown Diamond was created by Chemical Vapor Deposition (CVD) growth process.
Indications of post-growth treatment.



February 12, 2026
IGI Report No **LG772683002**
CUSHION MODIFIED BRILLIANT
14.81 X 11.27 X 7.02 MM
Carat Weight **11.10 CARATS**
Color Grade **FANCY VIVID BROWNISH PINK**
Clarity Grade **SI 1**
Depth **62.3%**
Table **64%**
Girdle **Thick to Very Thick (Faceted)**
Culet **Pointed**
Polish **EXCELLENT**
Symmetry **EXCELLENT**
Fluorescence **STRONG**
Inscription(s) **LG772683002**
Comments: This Laboratory Grown Diamond was created by Chemical Vapor Deposition (CVD) growth process.
Indications of post-growth treatment.