



ELECTRONIC COPY

LG772682999
Report verification at igi.org



February 13, 2026
IGI Report Number **LG772682999**

Description **LABORATORY GROWN DIAMOND**

Shape and Cutting Style **CUT CORNERED
RECTANGULAR MODIFIED
BRILLIANT**

Measurements **9.97 X 7.14 X 4.15 MM**

GRADING RESULTS

Carat Weight **3.02 CARATS**

Color Grade **FANCY INTENSE PINK**

Clarity Grade **VS 1**

February 13, 2026

IGI Report Number **LG772682999**

Description **LABORATORY GROWN DIAMOND**

Shape and Cutting Style **CUT CORNERED RECTANGULAR
MODIFIED BRILLIANT**

Measurements **9.97 X 7.14 X 4.15 MM**

GRADING RESULTS

Carat Weight **3.02 CARATS**

Color Grade **FANCY INTENSE PINK**

Clarity Grade **VS 1**

ADDITIONAL GRADING INFORMATION

Polish **EXCELLENT**

Symmetry **EXCELLENT**

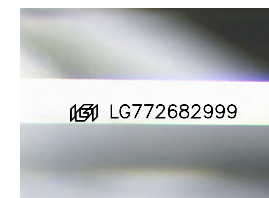
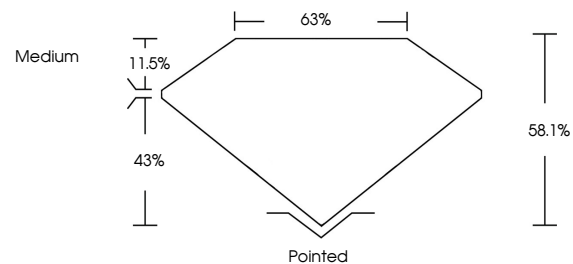
Fluorescence **STRONG**

Inscription(s) **IGI LG772682999**

Comments: This Laboratory Grown Diamond was created by Chemical Vapor Deposition (CVD) growth process.

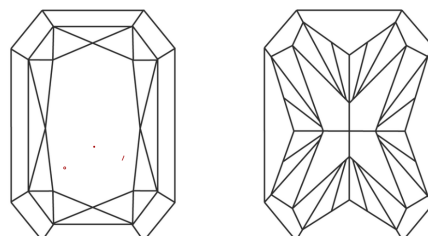
Indications of post-growth treatment.

PROPORTIONS



Sample Image Used

CLARITY CHARACTERISTICS



KEY TO SYMBOLS

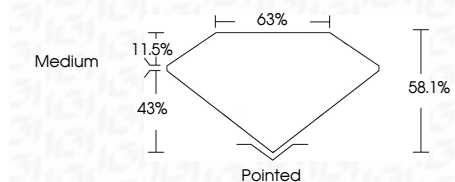
Red symbols indicate internal characteristics.
Green symbols indicate external characteristics.

COLOR

D E F G H I J Faint Very Light Light

CLARITY

FL	IF	VS ¹⁻²	VS ¹⁻²	SI ¹⁻²	I ¹⁻³
Flawless	Internally Flawless	Very Very Slightly Included	Very Slightly Included	Slightly Included	Included



ADDITIONAL GRADING INFORMATION

Polish **EXCELLENT**

Symmetry **EXCELLENT**

Fluorescence **STRONG**

Inscription(s) **IGI LG772682999**

Comments: This Laboratory Grown Diamond was created by Chemical Vapor Deposition (CVD) growth process. Indications of post-growth treatment.



IGI



February 13, 2026
IGI Report No LG772682999
CUT CORNERED RECT. MODIFIED BRILLIANT
9.97 X 7.14 X 4.15 MM
3.02 CARATS
FANCY INTENSE PINK
VS 1
58.1%
63%
Medium
Pointed
EXCELLENT
EXCELLENT
STRONG
IGI LG772682999

Comments: This Laboratory Grown Diamond was created by Chemical Vapor Deposition (CVD) growth process. Indications of post-growth treatment.