



ELECTRONIC COPY

LG772682926
Report verification at igi.org



February 5, 2026

IGI Report Number **LG772682926**

Description **LABORATORY GROWN DIAMOND**

Shape and Cutting Style **OPTICA STELO (ROUND
MODIFIED BRILLIANT)**

Measurements **9.88 - 9.92 X 6.23 MM**

GRADING RESULTS

Carat Weight **3.80 CARATS**

Color Grade **D**

Clarity Grade **VS 1**

Cut Grade **EXCELLENT**

February 5, 2026

IGI Report Number **LG772682926**

Description **LABORATORY GROWN DIAMOND**

Shape and Cutting Style **OPTICA STELO (ROUND
MODIFIED BRILLIANT)**

Measurements **9.88 - 9.92 X 6.23 MM**

GRADING RESULTS

Carat Weight **3.80 CARATS**

Color Grade **D**

Clarity Grade **VS 1**

Cut Grade **EXCELLENT**

ADDITIONAL GRADING INFORMATION

Polish **EXCELLENT**

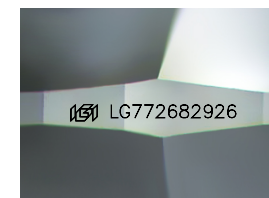
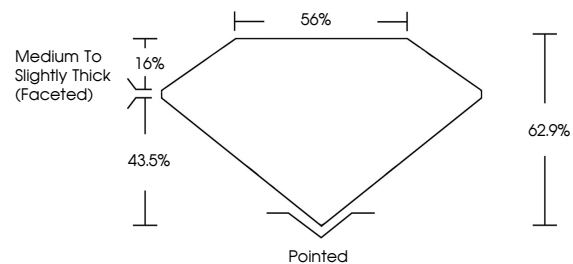
Symmetry **EXCELLENT**

Fluorescence **NONE**

Inscription(s) **IGI LG772682926**

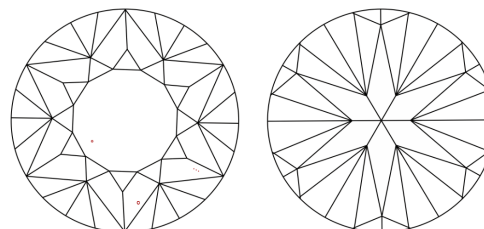
Comments: This Laboratory Grown Diamond was created by Chemical Vapor Deposition (CVD) growth process. Type IIa

PROPORTIONS



Sample Image Used

CLARITY CHARACTERISTICS



KEY TO SYMBOLS

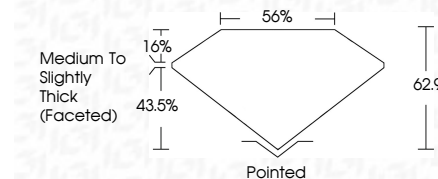
Red symbols indicate internal characteristics.
Green symbols indicate external characteristics.

COLOR

D E F G H I J Faint Very Light Light

CLARITY

FL	IF	VS ¹⁻²	VS ¹⁻²	SI ¹⁻²	I ¹⁻³
Flawless	Internally Flawless	Very Very Slightly Included	Very Slightly Included	Slightly Included	Included



ADDITIONAL GRADING INFORMATION

Polish **EXCELLENT**

Symmetry **EXCELLENT**

Fluorescence **NONE**

Inscription(s) **IGI LG772682926**

Comments: This Laboratory Grown Diamond was created by Chemical Vapor Deposition (CVD) growth process. Type IIa



IGI



February 5, 2026
IGI Report No LG772682926
OPTICA STELO (ROUND MODIFIED BRILLIANT)
9.88 - 9.92 X 6.23 MM
3.80 CARATS
D
VS 1
EXCELLENT
62.9%
56%
Medium To Slightly Thick (Faceted)
Pointed
EXCELLENT
EXCELLENT
NONE
IGI LG772682926

Cutler
Polish
Symmetry
Fluorescence
Inscriptions(s)

Comments: This Laboratory Grown Diamond was created by Chemical Vapor Deposition (CVD) growth process. Type IIa