



**ELECTRONIC COPY**

LG772682923  
Report verification at igi.org



February 4, 2026

IGI Report Number **LG772682923**

Description **LABORATORY GROWN DIAMOND**

Shape and Cutting Style **OPTICA STELO (ROUND  
MODIFIED BRILLIANT)**

Measurements **9.93 - 9.98 X 6.22 MM**

**GRADING RESULTS**

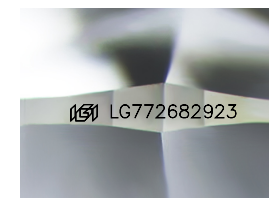
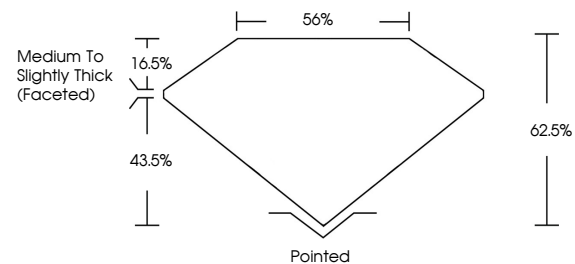
Carat Weight **3.78 CARATS**

Color Grade **E**

Clarity Grade **VVS 2**

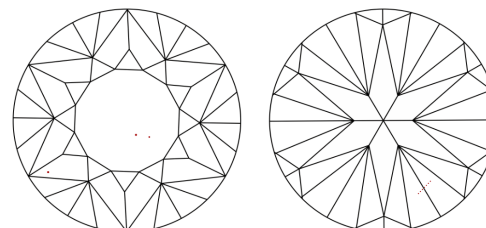
Cut Grade **EXCELLENT**

**PROPORTIONS**



Sample Image Used

**CLARITY CHARACTERISTICS**



**KEY TO SYMBOLS**

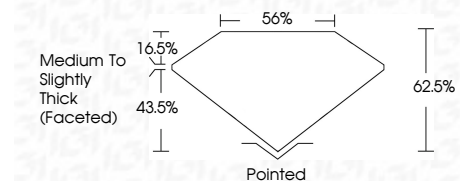
Red symbols indicate internal characteristics.  
Green symbols indicate external characteristics.

**COLOR**

D E F G H I J Faint Very Light Light

**CLARITY**

FL	IF	VVS <sup>1-2</sup>	VS <sup>1-2</sup>	SI <sup>1-2</sup>	I <sup>1-3</sup>
Flawless	Internally Flawless	Very Very Slightly Included	Very Slightly Included	Slightly Included	Included



**ADDITIONAL GRADING INFORMATION**

Polish **EXCELLENT**

Symmetry **EXCELLENT**

Fluorescence **NONE**

Inscription(s) **(IGI) LG772682923**

Comments: This Laboratory Grown Diamond was created by Chemical Vapor Deposition (CVD) growth process. Type IIa

February 4, 2026  
IGI Report Number **LG772682923**  
Description **LABORATORY GROWN DIAMOND**  
Shape and Cutting Style **OPTICA STELO (ROUND  
MODIFIED BRILLIANT)**  
Measurements **9.93 - 9.98 X 6.22 MM**

**GRADING RESULTS**

Carat Weight **3.78 CARATS**

Color Grade **E**

Clarity Grade **VVS 2**

Cut Grade **EXCELLENT**

**ADDITIONAL GRADING INFORMATION**

Polish **EXCELLENT**

Symmetry **EXCELLENT**

Fluorescence **NONE**

Inscription(s) **(IGI) LG772682923**

Comments: This Laboratory Grown Diamond was created by Chemical Vapor Deposition (CVD) growth process. Type IIa



**IGI**



February 4, 2026  
IGI Report No LG772682923  
**OPTICA STELO (ROUND MODIFIED BRILLIANT)**  
9.93 - 9.98 X 6.22 MM  
3.78 CARATS  
E  
VVS 2  
EXCELLENT  
62.5%  
56%  
Medium To Slightly Thick (Faceted)  
Pointed  
EXCELLENT  
EXCELLENT  
NONE  
NONE  
IGI LG772682923  
Comments: This Laboratory Grown Diamond was created by Chemical Vapor Deposition (CVD) growth process. Type IIa