



ELECTRONIC COPY

LG772678853
Report verification at igi.org



February 9, 2026

IGI Report Number **LG772678853**

Description **LABORATORY GROWN DIAMOND**

Shape and Cutting Style **CUT CORNERED
RECTANGULAR MODIFIED
BRILLIANT**

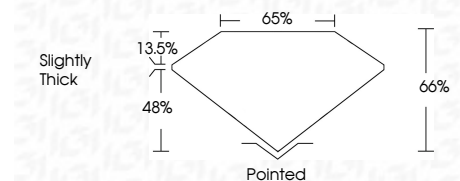
Measurements **10.86 X 8.03 X 5.30 MM**

GRADING RESULTS

Carat Weight **4.06 CARATS**

Color Grade **F**

Clarity Grade **VVS 2**



ADDITIONAL GRADING INFORMATION

Polish **EXCELLENT**

Symmetry **EXCELLENT**

Fluorescence **NONE**

Inscription(s) **IGI LG772678853**

Comments: This Laboratory Grown Diamond was created by Chemical Vapor Deposition (CVD) growth process. Type IIa



| | | | | | | | | | | | | | | |
|------------------|---------------------------|---------------------------------------|------------------------|--------------|-------------|---------------|-------|--------|----------------|---------|-----------|--------------|----------------|---|
| February 9, 2026 | IGI Report No LG772678853 | CUT CORNERED RECT. MODIFIED BRILLIANT | 10.86 X 8.03 X 5.30 MM | 4.06 CARATS | F | VVS 2 | 66% | 65% | Slightly Thick | Pointed | EXCELLENT | EXCELLENT | NONE | IGI LG772678853 |
| Polish | Symmetry | Fluorescence | Inscription(s) | Carat Weight | Color Grade | Clarity Grade | Table | Girdle | Culet | Polish | Symmetry | Fluorescence | Inscription(s) | Comments: This Laboratory Grown Diamond was created by Chemical Vapor Deposition (CVD) growth process. Type IIa |

LABORATORY GROWN DIAMOND REPORT

February 9, 2026

IGI Report Number **LG772678853**

Description **LABORATORY GROWN DIAMOND**

Shape and Cutting Style **CUT CORNERED RECTANGULAR
MODIFIED BRILLIANT**

Measurements **10.86 X 8.03 X 5.30 MM**

GRADING RESULTS

Carat Weight **4.06 CARATS**

Color Grade **F**

Clarity Grade **VVS 2**

ADDITIONAL GRADING INFORMATION

Polish **EXCELLENT**

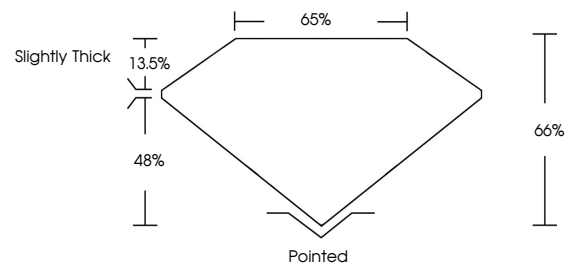
Symmetry **EXCELLENT**

Fluorescence **NONE**

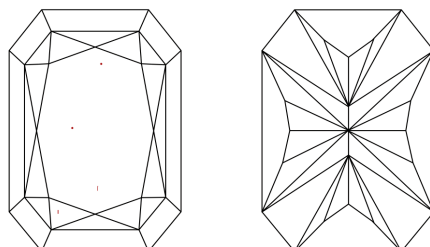
Inscription(s) **IGI LG772678853**

Comments: This Laboratory Grown Diamond was created by Chemical Vapor Deposition (CVD) growth process. Type IIa

PROPORTIONS

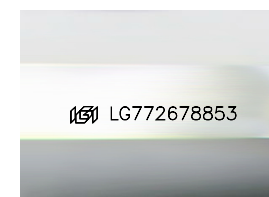


CLARITY CHARACTERISTICS



KEY TO SYMBOLS

Red symbols indicate internal characteristics.
Green symbols indicate external characteristics.



Sample Image Used

COLOR

D E F G H I J Faint Very Light Light

CLARITY

| | | | | | |
|----------|---------------------|-----------------------------|------------------------|-------------------|------------------|
| FL | IF | VVS ¹⁻² | VS ¹⁻² | SI ¹⁻² | I ¹⁻³ |
| Flawless | Internally Flawless | Very Very Slightly Included | Very Slightly Included | Slightly Included | Included |

