



ELECTRONIC COPY

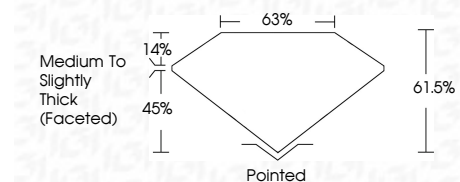
LG772678658
Report verification at igi.org



February 13, 2026
IGI Report Number **LG772678658**
Description **LABORATORY GROWN DIAMOND**
Shape and Cutting Style **ROUND MODIFIED BRILLIANT**
Measurements **6.39 - 6.39 X 3.93 MM**

GRADING RESULTS

Carat Weight **1.07 CARAT**
Color Grade **FANCY PINK**
Clarity Grade **VVS 2**



ADDITIONAL GRADING INFORMATION

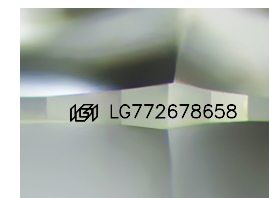
Polish **VERY GOOD**
Symmetry **EXCELLENT**
Fluorescence **STRONG**

Inscription(s) **IGI LG772678658**
Comments: This Laboratory Grown Diamond was created by Chemical Vapor Deposition (CVD) growth process. Indications of post-growth treatment.



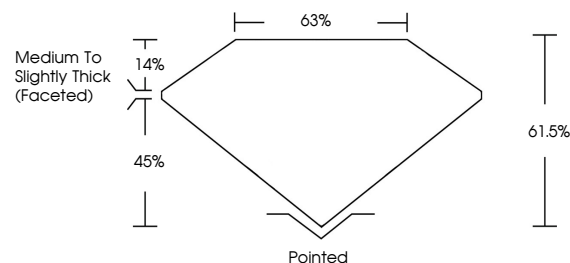
February 13, 2026
IGI Report No. **LG772678658**
ROUND MODIFIED BRILLIANT
6.39 - 6.39 X 3.93 MM
1.07 CARAT
FANCY PINK
VVS 2
61.6%
63%
Medium to Slightly Thick (Faceted)
Pointed
VERY GOOD
EXCELLENT
STRONG
IGI LG772678658

Comments: This Laboratory Grown Diamond was created by Chemical Vapor Deposition (CVD) growth process. Indications of post-growth treatment.

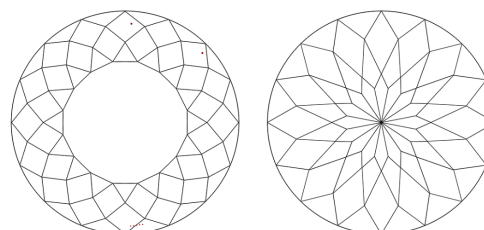


Sample Image Used

PROPORTIONS



CLARITY CHARACTERISTICS



KEY TO SYMBOLS

Red symbols indicate internal characteristics.
Green symbols indicate external characteristics.

COLOR

D E F G H I J Faint Very Light Light

CLARITY

FL	IF	VVS ¹⁻²	VS ¹⁻²	SI ¹⁻²	I ¹⁻³
Flawless	Internally Flawless	Very Very Slightly Included	Very Slightly Included	Slightly Included	Included

