



**ELECTRONIC COPY**

LG772673814  
Report verification at igi.org



February 9, 2026

IGI Report Number **LG772673814**

Description **LABORATORY GROWN DIAMOND**

Shape and Cutting Style **ROUND BRILLIANT**

Measurements **7.28 - 7.32 X 4.37 MM**

**GRADING RESULTS**

Carat Weight **1.44 CARAT**

Color Grade **D**

Clarity Grade **VS 1**

Cut Grade **IDEAL**

February 9, 2026

IGI Report Number **LG772673814**

Description **LABORATORY GROWN DIAMOND**

Shape and Cutting Style **ROUND BRILLIANT**

Measurements **7.28 - 7.32 X 4.37 MM**

**GRADING RESULTS**

Carat Weight **1.44 CARAT**

Color Grade **D**

Clarity Grade **VS 1**

Cut Grade **IDEAL**

**ADDITIONAL GRADING INFORMATION**

Polish **EXCELLENT**

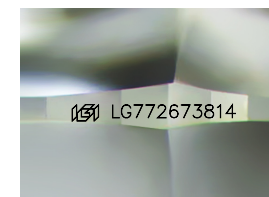
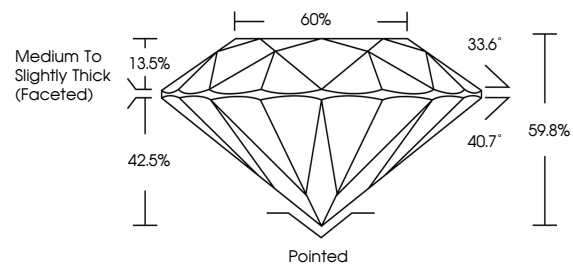
Symmetry **EXCELLENT**

Fluorescence **NONE**

Inscription(s) **IGI LG772673814**

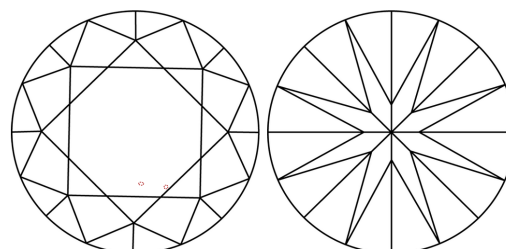
Comments: This Laboratory Grown Diamond was created by Chemical Vapor Deposition (CVD) growth process.  
Type IIa

**PROPORTIONS**



Sample Image Used

**CLARITY CHARACTERISTICS**



**KEY TO SYMBOLS**

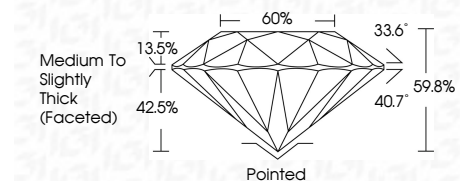
Red symbols indicate internal characteristics.  
Green symbols indicate external characteristics.

**COLOR**

D E F G H I J Faint Very Light Light

**CLARITY**

FL	IF	VS <sup>1-2</sup>	VS <sup>1-2</sup>	SI <sup>1-2</sup>	I <sup>1-3</sup>
Flawless	Internally Flawless	Very Very Slightly Included	Very Slightly Included	Slightly Included	Included



**ADDITIONAL GRADING INFORMATION**

Polish **EXCELLENT**

Symmetry **EXCELLENT**

Fluorescence **NONE**

Inscription(s) **IGI LG772673814**

Comments: This Laboratory Grown Diamond was created by Chemical Vapor Deposition (CVD) growth process.  
Type IIa



**IGI**



February 9, 2026  
IGI Report No LG772673814  
**ROUND BRILLIANT**

**1.44 CARAT**  
D

**VS 1**  
IDEAL

**59.8%**  
60%  
Medium To Slightly Thick (Faceted)

**Pointed**  
EXCELLENT  
EXCELLENT  
NONE  
IGI LG772673814

Cut: **Pointed**  
Polish: **EXCELLENT**  
Symmetry: **EXCELLENT**  
Fluorescence: **NONE**  
Inscription(s): **IGI LG772673814**

Comments: This Laboratory Grown Diamond was created by Chemical Vapor Deposition (CVD) growth process.  
Type IIa