



LABORATORY GROWN DIAMOND REPORT

March 5, 2026
 IGI Report Number **LG772665478**
 Description **LABORATORY GROWN DIAMOND**
 Shape and Cutting Style **ROUND BRILLIANT**
 Measurements **5.12 - 5.14 X 3.19 MM**

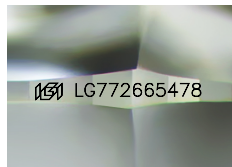
GRADING RESULTS

Carat Weight **0.51 CARAT**
 Color Grade **E**
 Clarity Grade **VVS 1**
 Cut Grade **IDEAL**

ADDITIONAL GRADING INFORMATION

Polish **EXCELLENT**
 Symmetry **EXCELLENT**
 Fluorescence **NONE**
 Inscription(s) **IGI LG772665478**

Comments: As Grown - No indication of post-growth treatment. This Laboratory Grown Diamond was created by High Pressure High Temperature (HPHT) growth process. Type II



Sample Image Used



March 5, 2026
 IGI Report Number **LG772665478**
ROUND BRILLIANT
LABORATORY GROWN DIAMOND
5.12 - 5.14 X 3.19 MM
 Carat Weight **0.51 CARAT**
 Color Grade **E**
 Clarity Grade **VVS 1**
 Cut Grade **IDEAL**
 Polish **EXCELLENT**
 Symmetry **EXCELLENT**
 Fluorescence **NONE**
 Inscription(s) **IGI LG772665478**

Comments: As Grown - No indication of post-growth treatment. This Laboratory Grown Diamond was created by High Pressure High Temperature (HPHT) growth process. Type II



March 5, 2026
 IGI Report Number **LG772665478**
ROUND BRILLIANT
LABORATORY GROWN DIAMOND
5.12 - 5.14 X 3.19 MM
 Carat Weight **0.51 CARAT**
 Color Grade **E**
 Clarity Grade **VVS 1**
 Cut Grade **IDEAL**
 Polish **EXCELLENT**
 Symmetry **EXCELLENT**
 Fluorescence **NONE**
 Inscription(s) **IGI LG772665478**

Comments: As Grown - No indication of post-growth treatment. This Laboratory Grown Diamond was created by High Pressure High Temperature (HPHT) growth process. Type II

THIS DOCUMENT WAS PRODUCED WITH THE FOLLOWING SECURITY MEASURES: SPECIAL DOCUMENT PAPER, INK SCREENS, WATERMARK, BACKGROUND DESIGNS, HOLOGRAM AND OTHER SECURITY FEATURES NOT LISTED AND DO EXCEED DOCUMENT SECURITY INDUSTRY GUIDELINES.