



ELECTRONIC COPY

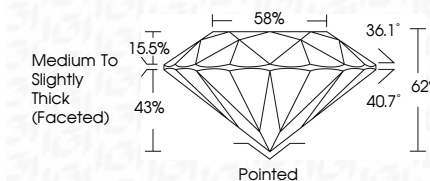
LG772661941
Report verification at igi.org



March 9, 2026
IGI Report Number LG772661941
Description LABORATORY GROWN DIAMOND
Shape and Cutting Style ROUND BRILLIANT
Measurements 6.96 - 7.00 X 4.32 MM

GRADING RESULTS

Carat Weight 1.30 CARAT
Color Grade D
Clarity Grade VVS 2
Cut Grade IDEAL

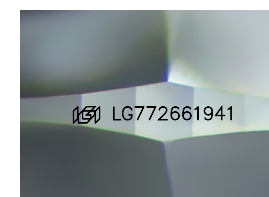


ADDITIONAL GRADING INFORMATION

Polish EXCELLENT
Symmetry EXCELLENT
Fluorescence NONE
Inscription(s) IGI LG772661941
Comments: As Grown - No indication of post-growth treatment.
This Laboratory Grown Diamond was created by High Pressure High Temperature (HPHT) growth process.
Type II

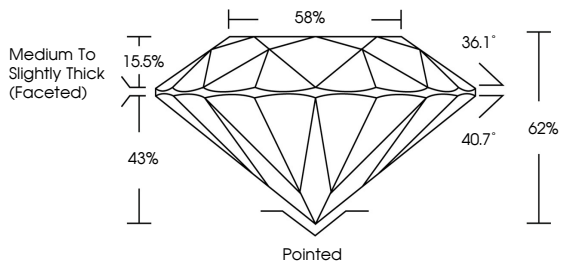


March 9, 2026
IGI Report No LG772661941
ROUND BRILLIANT
6.96 - 7.00 X 4.32 MM
1.30 CARAT
Color Grade D
Clarity Grade VVS 2
Cut Grade IDEAL
Depth 62%
Table 86%
Medium To Slightly Thick (Faceted)
Culet Pointed
Polish EXCELLENT
Symmetry EXCELLENT
Fluorescence NONE
Inscriptions(s) IGI LG772661941
Comments: As Grown - No indication of post-growth treatment.
This Laboratory Grown Diamond was created by High Pressure High Temperature (HPHT) growth process.
Type II

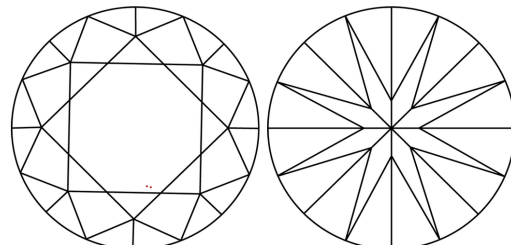


Sample Image Used

PROPORTIONS



CLARITY CHARACTERISTICS



KEY TO SYMBOLS

Red symbols indicate internal characteristics.
Green symbols indicate external characteristics.

COLOR

Table with color grades: D, E, F, G, H, I, J, Faint, Very Light, Light

CLARITY

Table with clarity grades: FL, IF, VVS 1-2, VS 1-2, SI 1-2, I 1-3, Flawless, Internally Flawless, Very Very Slightly Included, Very Slightly Included, Slightly Included, Included

