



ELECTRONIC COPY

LG772661701
Report verification at igi.org

LABORATORY GROWN DIAMOND REPORT

March 19, 2026
IGI Report Number **LG772661701**
Description **LABORATORY GROWN DIAMOND**
Shape and Cutting Style **ROUND BRILLIANT**
Measurements **6.52 - 6.56 X 4.05 MM**

GRADING RESULTS

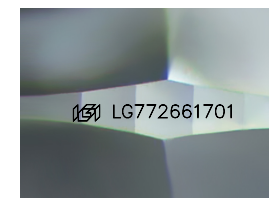
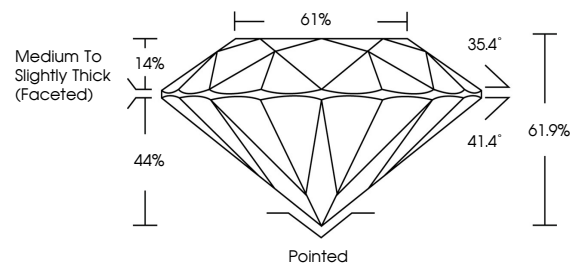
Carat Weight **1.07 CARAT**
Color Grade **FANCY INTENSE PINK**
Clarity Grade **VS 1**
Cut Grade **EXCELLENT**

ADDITIONAL GRADING INFORMATION

Polish **EXCELLENT**
Symmetry **EXCELLENT**
Fluorescence **SLIGHT**
Inscription(s) **IGI LG772661701**

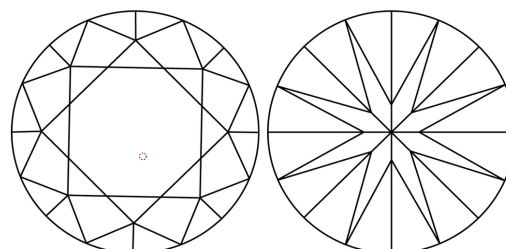
Comments: This Laboratory Grown Diamond was created by Chemical Vapor Deposition (CVD) growth process.
Indications of post-growth treatment.

PROPORTIONS



Sample Image Used

CLARITY CHARACTERISTICS



KEY TO SYMBOLS

Red symbols indicate internal characteristics.
Green symbols indicate external characteristics.

COLOR

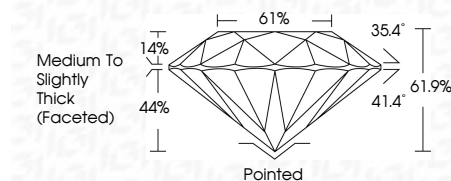
D E F G H I J Faint Very Light Light

CLARITY

FL	IF	VS ¹⁻²	VS ¹⁻²	SI ¹⁻²	I ¹⁻³
Flawless	Internally Flawless	Very Very Slightly Included	Very Slightly Included	Slightly Included	Included



March 19, 2026
IGI Report Number **LG772661701**
Description **LABORATORY GROWN DIAMOND**
Shape and Cutting Style **ROUND BRILLIANT**
Measurements **6.52 - 6.56 X 4.05 MM**
GRADING RESULTS
Carat Weight **1.07 CARAT**
Color Grade **FANCY INTENSE PINK**
Clarity Grade **VS 1**
Cut Grade **EXCELLENT**



ADDITIONAL GRADING INFORMATION

Polish **EXCELLENT**
Symmetry **EXCELLENT**
Fluorescence **SLIGHT**
Inscription(s) **IGI LG772661701**
Comments: This Laboratory Grown Diamond was created by Chemical Vapor Deposition (CVD) growth process.
Indications of post-growth treatment.



March 19, 2026
IGI Report No LG772661701
ROUND BRILLIANT
6.52 - 6.56 X 4.05 MM
1.07 CARAT
FANCY INTENSE PINK
VS 1
EXCELLENT
61.9%
61%
Medium To Slightly Thick (Faceted)
Pointed
EXCELLENT
EXCELLENT
SLIGHT
IGI LG772661701
Comments: This Laboratory Grown Diamond was created by Chemical Vapor Deposition (CVD) growth process.
Indications of post-growth treatment.