



ELECTRONIC COPY

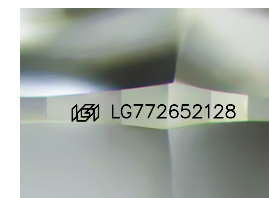
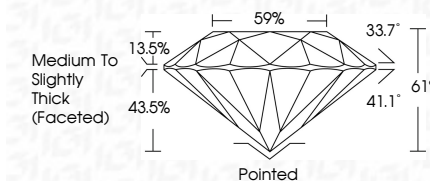
LG772652128
Report verification at igi.org



February 7, 2026
IGI Report Number LG772652128
Description LABORATORY GROWN DIAMOND
Shape and Cutting Style ROUND BRILLIANT
Measurements 8.07 - 8.10 X 4.93 MM

GRADING RESULTS

Carat Weight 1.98 CARAT
Color Grade E
Clarity Grade VVS 2
Cut Grade IDEAL



Sample Image Used

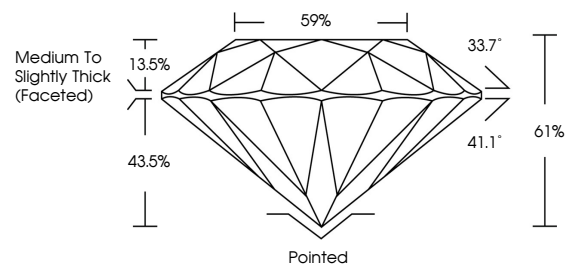
ADDITIONAL GRADING INFORMATION

Polish EXCELLENT
Symmetry EXCELLENT
Fluorescence NONE
Inscription(s) (IGI) LG772652128
Comments: This Laboratory Grown Diamond was created by Chemical Vapor Deposition (CVD) growth process. Type IIa

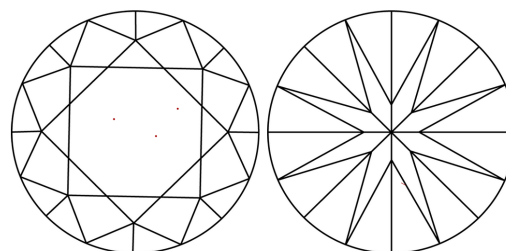


IGI

PROPORTIONS



CLARITY CHARACTERISTICS



KEY TO SYMBOLS

Red symbols indicate internal characteristics.
Green symbols indicate external characteristics.

COLOR

D E F G H I J Faint Very Light Light

CLARITY

FL IF VS 1-2 VS 1-2 SI 1-2 I 1-3
Flawless Internally Flawless Very Very Slightly Included Very Slightly Included Slightly Included Included



February 7, 2026
IGI Report No LG772652128
ROUND BRILLIANT
1.98 CARAT E
8.07 - 8.10 X 4.93 MM
Carat Weight
Color Grade VVS 2
Clarity Grade IDEAL
Depth 61%
Table 59%
Girdle Medium To Slightly Thick (Faceted)
Culet Pointed
Polish EXCELLENT
Symmetry EXCELLENT
Fluorescence NONE
Inscription(s) (IGI) LG772652128
Comments: This Laboratory Grown Diamond was created by Chemical Vapor Deposition (CVD) growth process. Type IIa