



**INTERNATIONAL
GEMOLOGICAL
INSTITUTE**

ELECTRONIC COPY

LABORATORY GROWN DIAMOND REPORT

February 10, 2026
 IGI Report Number **LG772651870**
 Description **LABORATORY GROWN DIAMOND**
 Shape and Cutting Style **ROUND BRILLIANT**
 Measurements **5.86 - 5.89 X 3.62 MM**

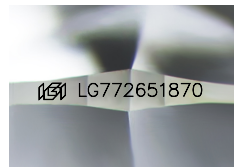
GRADING RESULTS

Carat Weight **0.77 CARAT**
 Color Grade **F**
 Clarity Grade **VVS 2**
 Cut Grade **IDEAL**

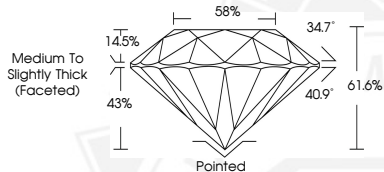
ADDITIONAL GRADING INFORMATION

Polish **EXCELLENT**
 Symmetry **EXCELLENT**
 Fluorescence **NONE**
 Inscription(s) **IGI LG772651870**

Comments: HEARTS & ARROWS
 This Laboratory Grown Diamond was created by Chemical Vapor
 Deposition (CVD) growth process.
 Type Ila



Sample Image Used



HEARTS & ARROWS



February 10, 2026
 IGI Report Number **LG772651870**
 ROUND BRILLIANT
 LABORATORY GROWN DIAMOND
5.86 - 5.89 X 3.62 MM
 Carat Weight **0.77 CARAT**
 Color Grade **F**
 Clarity Grade **VVS 2**
 Cut Grade **IDEAL**
 Polish **EXCELLENT**
 Symmetry **EXCELLENT**
 Fluorescence **NONE**
 Inscription(s) **IGI LG772651870**
 Comments: HEARTS & ARROWS This
 Laboratory Grown Diamond was
 created by Chemical Vapor
 Deposition (CVD) growth process.
 Type Ila



February 10, 2026
 IGI Report Number **LG772651870**
 ROUND BRILLIANT
 LABORATORY GROWN DIAMOND
5.86 - 5.89 X 3.62 MM
 Carat Weight **0.77 CARAT**
 Color Grade **F**
 Clarity Grade **VVS 2**
 Cut Grade **IDEAL**
 Polish **EXCELLENT**
 Symmetry **EXCELLENT**
 Fluorescence **NONE**
 Inscription(s) **IGI LG772651870**
 Comments: HEARTS & ARROWS This
 Laboratory Grown Diamond was
 created by Chemical Vapor
 Deposition (CVD) growth process.
 Type Ila

THIS DOCUMENT WAS PRODUCED WITH THE FOLLOWING SECURITY MEASURES: SPECIAL DOCUMENT PAPER, INK SCREENS, WATERMARK, BACKGROUND DESIGNS, HOLOGRAM AND OTHER SECURITY FEATURES NOT LISTED AND DO EXCEED DOCUMENT SECURITY INDUSTRY GUIDELINES.

For terms & conditions and to verify this report, please visit www.igi.org