



ELECTRONIC COPY

LABORATORY GROWN DIAMOND REPORT

LG772651356
Report verification at igi.org

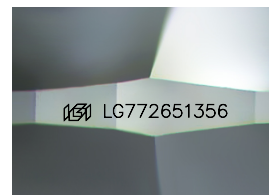
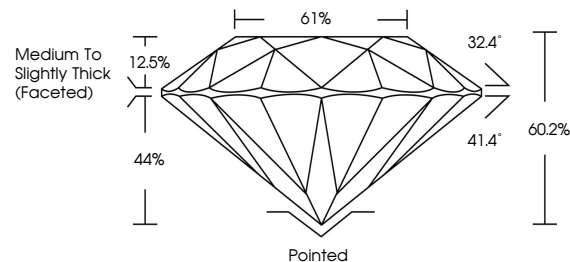
February 10, 2026	
IGI Report Number	LG772651356
Description	LABORATORY GROWN DIAMOND
Shape and Cutting Style	ROUND BRILLIANT
Measurements	7.41 - 7.43 X 4.47 MM
GRADING RESULTS	
Carat Weight	1.50 CARAT
Color Grade	E
Clarity Grade	VVS 2
Cut Grade	EXCELLENT

ADDITIONAL GRADING INFORMATION

Polish	EXCELLENT
Symmetry	EXCELLENT
Fluorescence	NONE
Inscription(s)	151 LG772651356

Comments: This Laboratory Grown Diamond was created by Chemical Vapor Deposition (CVD) growth process.
Type IIa

PROPORTIONS



Sample Image Used

COLOR

D E F G H I J Faint Very Light Light

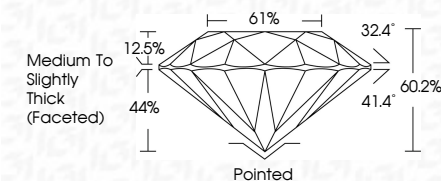
CLARITY

FL	IF	VVS ¹⁻²	VS ¹⁻²	SI ¹⁻²	I ¹⁻³
Flawless	Internally Flawless	Very Very Slightly Included	Very Slightly Included	Slightly Included	Included

LABORATORY GROWN DIAMOND REPORT



February 10, 2026	
IGI Report Number	LG772651356
Description	LABORATORY GROWN DIAMOND
Shape and Cutting Style	ROUND BRILLIANT
Measurements	7.41 - 7.43 X 4.47 MM
GRADING RESULTS	
Carat Weight	1.50 CARAT
Color Grade	E
Clarity Grade	VVS 2
Cut Grade	EXCELLENT



ADDITIONAL GRADING INFORMATION

Polish	EXCELLENT
Symmetry	EXCELLENT
Fluorescence	NONE
Inscription(s)	LG LG772651356
Comments: This Laboratory Grown Diamond was created by Chemical Vapor Deposition (CVD) growth process.	
Type IIa	



© IGI 2020, International Gemological Institute

FD - 10 20



THIS DOCUMENT WAS PRODUCED WITH THE FOLLOWING SECURITY MEASURES: SPECIAL DOCUMENT PAPER, INK SCREENS, WATERMARK BACKGROUND DESIGNS, HOLOGRAM, AND OTHER SECURITY FEATURES NOT LISTED AND DO EXCEED DOCUMENT SECURITY INDUSTRY GUIDELINES

www.igi.org

February 10, 2026	1.80 CARAT	
GJ Report No. LG772651356	E	
ROUND BRILLIANT	VVS 2	
4.41 - 4.48 X 4.47 MM	EXCELLENT	
Color Grade	60.2%	
Clarity Grade	Medium to Slightly Thick (Faceted)	
Depth	Polished	
Table	EXCELLENT	
Girdle	EXCELLENT	
	NONE	
	161 LG772651356	
Comments:		
The Laboratory Grown Diamond was created by Chemical Vapor Deposition growth process.		
Type IIa		