



ELECTRONIC COPY

LG772649890
Report verification at igi.org



February 5, 2026

IGI Report Number **LG772649890**

Description **LABORATORY GROWN DIAMOND**

Shape and Cutting Style **CUSHION MODIFIED BRILLIANT**

Measurements **7.00 X 5.26 X 3.41 MM**

GRADING RESULTS

Carat Weight **1.06 CARAT**

Color Grade **D**

Clarity Grade **VS 1**

Cut Grade **IDEAL**

February 5, 2026

IGI Report Number **LG772649890**

Description **LABORATORY GROWN DIAMOND**

Shape and Cutting Style **CUSHION MODIFIED BRILLIANT**

Measurements **7.00 X 5.26 X 3.41 MM**

GRADING RESULTS

Carat Weight **1.06 CARAT**

Color Grade **D**

Clarity Grade **VS 1**

Cut Grade **IDEAL**

ADDITIONAL GRADING INFORMATION

Polish **EXCELLENT**

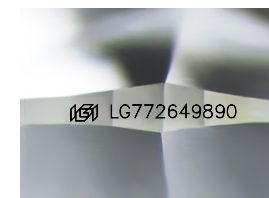
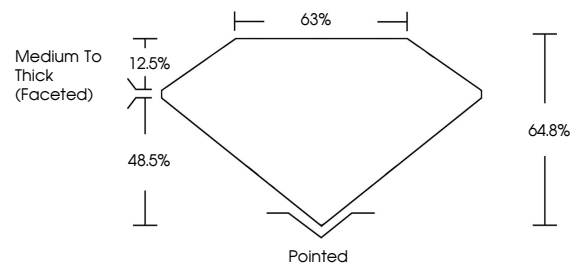
Symmetry **VERY GOOD**

Fluorescence **NONE**

Inscription(s) **IGI LG772649890**

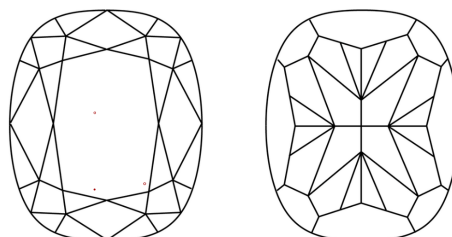
Comments: This Laboratory Grown Diamond was created by Chemical Vapor Deposition (CVD) growth process. Type IIa

PROPORTIONS



Sample Image Used

CLARITY CHARACTERISTICS



KEY TO SYMBOLS

Red symbols indicate internal characteristics.
Green symbols indicate external characteristics.

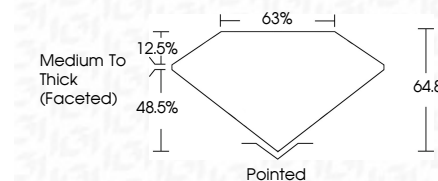
COLOR

D E F G H I J Faint Very Light Light

CLARITY

FL IF VS¹⁻² VS¹⁻² SI¹⁻² I¹⁻³

Flawless Internally Flawless Very Very Slightly Included Very Slightly Included Slightly Included Included



ADDITIONAL GRADING INFORMATION

Polish **EXCELLENT**

Symmetry **VERY GOOD**

Fluorescence **NONE**

Inscription(s) **IGI LG772649890**

Comments: This Laboratory Grown Diamond was created by Chemical Vapor Deposition (CVD) growth process. Type IIa



IGI



February 5, 2026	IGI Report No LG772649890	7.00 X 5.26 X 3.41 MM	1.06 CARAT	D	VS 1	IDEAL	64.8%	63%	Medium To Thick (Faceted)	Pointed	EXCELLENT	VERY GOOD	NONE	IGI LG772649890
CUSHION MODIFIED BRILLIANT														
Carat Weight	Color Grade	Clarity Grade	Cut Grade	Depth	Table	Girdle	Culet	Polish	Symmetry	Fluorescence	Inscription(s)			

Comments: This Laboratory Grown Diamond was created by Chemical Vapor Deposition (CVD) growth process. Type IIa