



ELECTRONIC COPY

LG772649764
Report verification at igi.org



February 12, 2026

IGI Report Number **LG772649764**

Description **LABORATORY GROWN DIAMOND**

Shape and Cutting Style **PEAR MODIFIED BRILLIANT**

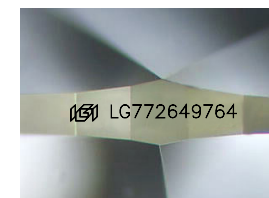
Measurements **10.27 X 6.31 X 4.21 MM**

GRADING RESULTS

Carat Weight **2.01 CARATS**

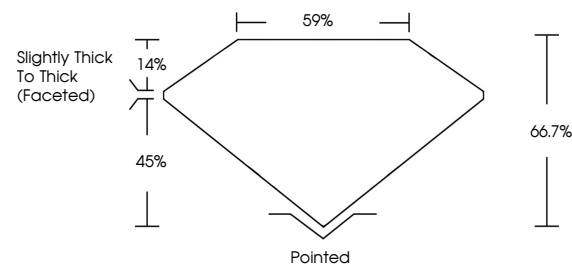
Color Grade **FANCY INTENSE YELLOW**

Clarity Grade **SI 2**

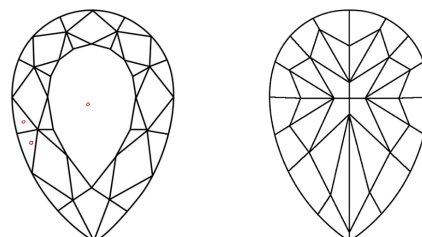


Sample Image Used

PROPORTIONS



CLARITY CHARACTERISTICS



KEY TO SYMBOLS

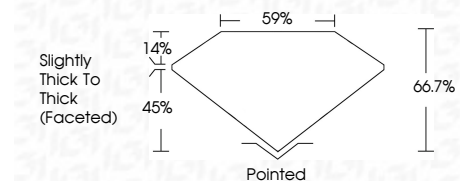
Red symbols indicate internal characteristics.
Green symbols indicate external characteristics.

COLOR

D E F G H I J Faint Very Light Light

CLARITY

FL	IF	VS ¹⁻²	VS ¹⁻²	SI ¹⁻²	I ¹⁻³
Flawless	Internally Flawless	Very Very Slightly Included	Very Slightly Included	Slightly Included	Included



ADDITIONAL GRADING INFORMATION

Polish **EXCELLENT**

Symmetry **EXCELLENT**

Fluorescence **NONE**

Inscription(s) **IGI LG772649764**

Comments: This Laboratory Grown Diamond was created by Chemical Vapor Deposition (CVD) growth process.



February 12, 2026
IGI Report No LG772649764
PEAR MODIFIED BRILLIANT

2.01 CARATS
Carat Weight
FANCY INTENSE YELLOW
Color Grade

SI 2
Clarity Grade
66.7%
Depth
59%
Table
Slightly Thick To Thick (Faceted)
Girdle

Pointed
Culet
EXCELLENT
Polish
EXCELLENT
Symmetry
NONE
Fluorescence
IGI LG772649764
Inscription(s)

Comments: This Laboratory Grown Diamond was created by Chemical Vapor Deposition (CVD) growth process.