



ELECTRONIC COPY

LG772649712
Report verification at igi.org



February 10, 2026

IGI Report Number **LG772649712**

Description **LABORATORY GROWN DIAMOND**

Shape and Cutting Style **LOZENGE STEP CUT**

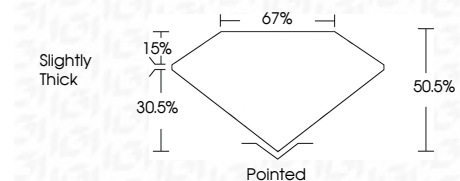
Measurements **19.50 X 9.78 X 4.94 MM**

GRADING RESULTS

Carat Weight **4.85 CARATS**

Color Grade **E**

Clarity Grade **VVS 2**



ADDITIONAL GRADING INFORMATION

Polish **EXCELLENT**

Symmetry **EXCELLENT**

Fluorescence **NONE**

Inscription(s) **(IGI) LG772649712**

Comments: This Laboratory Grown Diamond was created by Chemical Vapor Deposition (CVD) growth process. Type IIa



February 10, 2026	IGI Report No LG772649712	4.85 CARATS	E	VVS 2	60.6%	67%	Slightly Thick	Pointed	EXCELLENT	EXCELLENT	NONE	(IGI) LG772649712
LOZENGE STEP CUT	19.50 X 9.78 X 4.94 MM	Carat Weight	Color Grade	Clarity Grade	Depth	Table	Graile	Culet	Polish	Symmetry	Fluorescence	Inscription(s)

Comments: This Laboratory Grown Diamond was created by Chemical Vapor Deposition (CVD) growth process. Type IIa

LABORATORY GROWN DIAMOND REPORT

February 10, 2026

IGI Report Number **LG772649712**

Description **LABORATORY GROWN DIAMOND**

Shape and Cutting Style **LOZENGE STEP CUT**

Measurements **19.50 X 9.78 X 4.94 MM**

GRADING RESULTS

Carat Weight **4.85 CARATS**

Color Grade **E**

Clarity Grade **VVS 2**

ADDITIONAL GRADING INFORMATION

Polish **EXCELLENT**

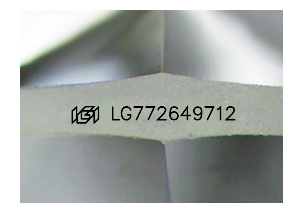
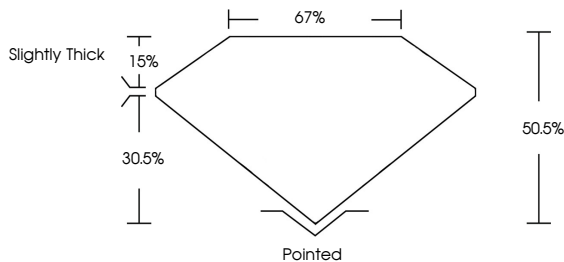
Symmetry **EXCELLENT**

Fluorescence **NONE**

Inscription(s) **(IGI) LG772649712**

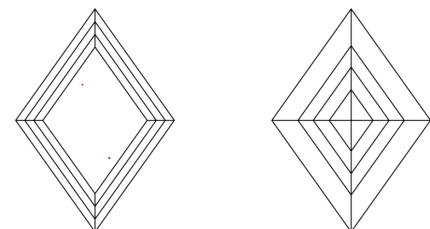
Comments: This Laboratory Grown Diamond was created by Chemical Vapor Deposition (CVD) growth process. Type IIa

PROPORTIONS



Sample Image Used

CLARITY CHARACTERISTICS



KEY TO SYMBOLS

Red symbols indicate internal characteristics.
Green symbols indicate external characteristics.

COLOR

D	E	F	G	H	I	J	Faint	Very Light	Light
---	---	---	---	---	---	---	-------	------------	-------

CLARITY

FL	IF	VVS ¹⁻²	VS ¹⁻²	SI ¹⁻²	I ¹⁻³
Flawless	Internally Flawless	Very Very Slightly Included	Very Slightly Included	Slightly Included	Included

