



ELECTRONIC COPY

LG772646401
Report verification at igi.org



February 16, 2026
IGI Report Number **LG772646401**
Description **LABORATORY GROWN DIAMOND**
Shape and Cutting Style **CUSHION MODIFIED BRILLIANT**
Measurements **6.82 X 5.23 X 3.30 MM**
GRADING RESULTS
Carat Weight **1.07 CARAT**
Color Grade **FANCY BROWN**
Clarity Grade **VS 1**

LABORATORY GROWN DIAMOND REPORT

February 16, 2026
IGI Report Number **LG772646401**
Description **LABORATORY GROWN DIAMOND**
Shape and Cutting Style **CUSHION MODIFIED BRILLIANT**
Measurements **6.82 X 5.23 X 3.30 MM**

GRADING RESULTS

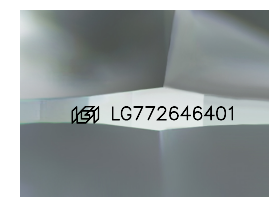
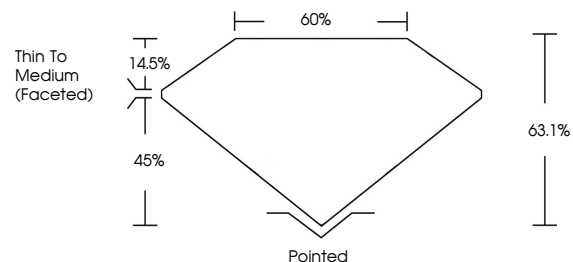
Carat Weight **1.07 CARAT**
Color Grade **FANCY BROWN**
Clarity Grade **VS 1**

ADDITIONAL GRADING INFORMATION

Polish **EXCELLENT**
Symmetry **EXCELLENT**
Fluorescence **NONE**
Inscription(s) **IGI LG772646401**

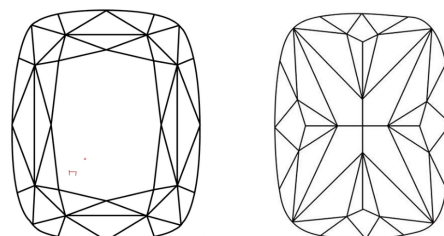
Comments: This Laboratory Grown Diamond was created by Chemical Vapor Deposition (CVD) growth process.
Indications of post-growth treatment.

PROPORTIONS



Sample Image Used

CLARITY CHARACTERISTICS



KEY TO SYMBOLS

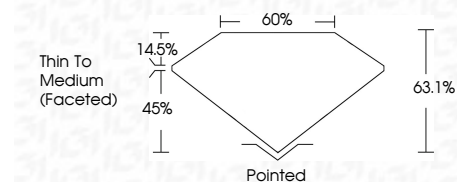
Red symbols indicate internal characteristics.
Green symbols indicate external characteristics.

COLOR

D E F G H I J Faint Very Light Light

CLARITY

FL	IF	VS ¹⁻²	VS ¹⁻²	SI ¹⁻²	I ¹⁻³
Flawless	Internally Flawless	Very Very Slightly Included	Very Slightly Included	Slightly Included	Included



ADDITIONAL GRADING INFORMATION

Polish **EXCELLENT**
Symmetry **EXCELLENT**
Fluorescence **NONE**
Inscription(s) **IGI LG772646401**
Comments: This Laboratory Grown Diamond was created by Chemical Vapor Deposition (CVD) growth process.
Indications of post-growth treatment.



February 16, 2026
IGI Report No **LG772646401**
CUSHION MODIFIED BRILLIANT
6.82 X 5.23 X 3.30 MM
Carat Weight **1.07 CARAT**
Color Grade **FANCY BROWN**
Clarity Grade **VS 1**
Table **63.1%**
Girdle **0.5%**
Thin To Medium (Faceted)
Culet **Pointed**
Polish **EXCELLENT**
Symmetry **EXCELLENT**
Fluorescence **NONE**
Inscription(s) **IGI LG772646401**

Comments: This Laboratory Grown Diamond was created by Chemical Vapor Deposition (CVD) growth process.
Indications of post-growth treatment.