



**ELECTRONIC COPY**

LG772644251  
Report verification at [igi.org](http://igi.org)



February 24, 2026

IGI Report Number **LG772644251**

Description **LABORATORY GROWN DIAMOND**

Shape and Cutting Style **CUT CORNERED  
RECTANGULAR MODIFIED  
BRILLIANT**

Measurements **8.63 X 6.04 X 3.88 MM**

**GRADING RESULTS**

Carat Weight **1.73 CARAT**

Color Grade **D**

Clarity Grade **VVS 1**

February 24, 2026

IGI Report Number **LG772644251**

Description **LABORATORY GROWN DIAMOND**

Shape and Cutting Style **CUT CORNERED RECTANGULAR  
MODIFIED BRILLIANT**

Measurements **8.63 X 6.04 X 3.88 MM**

**GRADING RESULTS**

Carat Weight **1.73 CARAT**

Color Grade **D**

Clarity Grade **VVS 1**

**ADDITIONAL GRADING INFORMATION**

Polish **EXCELLENT**

Symmetry **EXCELLENT**

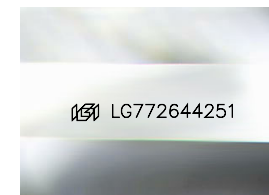
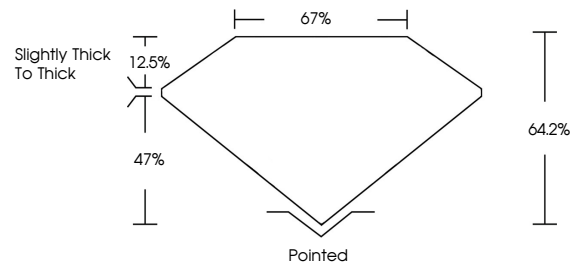
Fluorescence **NONE**

Inscription(s) **IGI LG772644251**

Comments: As Grown - No indication of post-growth treatment.

This Laboratory Grown Diamond was created by High Pressure High Temperature (HPHT) growth process. Type II

**PROPORTIONS**



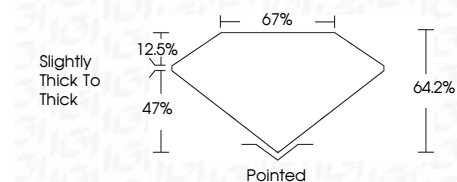
Sample Image Used

**COLOR**

D E F G H I J Faint Very Light Light

**CLARITY**

FL	IF	VVS <sup>1-2</sup>	VS <sup>1-2</sup>	SI <sup>1-2</sup>	I <sup>1-3</sup>
Flawless	Internally Flawless	Very Very Slightly Included	Very Slightly Included	Slightly Included	Included



**ADDITIONAL GRADING INFORMATION**

Polish **EXCELLENT**

Symmetry **EXCELLENT**

Fluorescence **NONE**

Inscription(s) **IGI LG772644251**

Comments: As Grown - No indication of post-growth treatment.

This Laboratory Grown Diamond was created by High Pressure High Temperature (HPHT) growth process. Type II



**IGI**



February 24, 2026  
IGI Report No LG772644251  
CUT CORNERED RECT. MODIFIED BRILLIANT  
8.63 X 6.04 X 3.88 MM  
Carat Weight 1.73 CARAT  
Color Grade D  
Clarity Grade VVS 1  
Depth 64.2%  
Table 67%  
Girdle Slightly thick to thick  
Culet Pointed  
Polish EXCELLENT  
Symmetry EXCELLENT  
Fluorescence NONE  
Inscription(s) IGI LG772644251  
Comments: As Grown - No indication of post-growth treatment.  
This Laboratory Grown Diamond was created by High Pressure High Temperature (HPHT) growth process. Type II