



ELECTRONIC COPY

LG772641569 Report verification at igi.org



February 11, 2026 IGI Report Number LG772641569 Description LABORATORY GROWN DIAMOND Shape and Cutting Style SQUARE CUSHION MODIFIED BRILLIANT Measurements 10.15 X 10.11 X 6.46 MM GRADING RESULTS Carat Weight 5.03 CARATS Color Grade D Clarity Grade VS 1

February 11, 2026 IGI Report Number LG772641569 Description LABORATORY GROWN DIAMOND Shape and Cutting Style SQUARE CUSHION MODIFIED BRILLIANT Measurements 10.15 X 10.11 X 6.46 MM

GRADING RESULTS

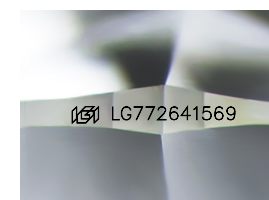
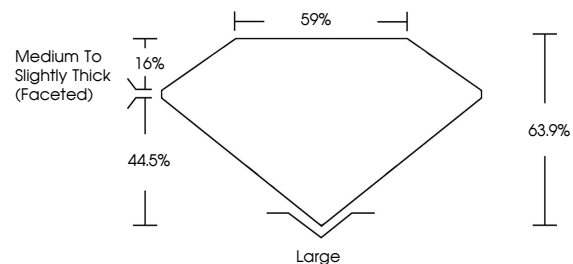
Carat Weight 5.03 CARATS Color Grade D Clarity Grade VS 1

ADDITIONAL GRADING INFORMATION

Polish EXCELLENT Symmetry EXCELLENT Fluorescence NONE Inscription(s) LG772641569

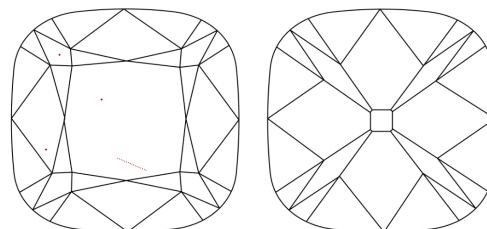
Comments: This Laboratory Grown Diamond was created by Chemical Vapor Deposition (CVD) growth process. Type IIa

PROPORTIONS



Sample Image Used

CLARITY CHARACTERISTICS



KEY TO SYMBOLS

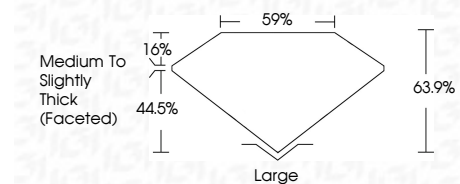
Red symbols indicate internal characteristics. Green symbols indicate external characteristics.

COLOR

D E F G H I J Faint Very Light Light

CLARITY

FL IF VS 1-2 VS 2-3 SI 1-2 I 1-3 Flawless Internally Flawless Very Very Slightly Included Very Slightly Included Slightly Included Included



ADDITIONAL GRADING INFORMATION

Polish EXCELLENT Symmetry EXCELLENT Fluorescence NONE Inscription(s) LG772641569 Comments: This Laboratory Grown Diamond was created by Chemical Vapor Deposition (CVD) growth process. Type IIa



February 11, 2026 IGI Report No LG772641569 SQUARE CUSHION MODIFIED BRILLIANT 10.15 X 10.11 X 6.46 MM 5.03 CARATS D VS 1 63.9% 59% Medium to Slightly Thick (Faceted) Large EXCELLENT EXCELLENT NONE NONE LG772641569 Comments: This Laboratory Grown Diamond was created by Chemical Vapor Deposition (CVD) growth process. Type IIa