



LABORATORY GROWN DIAMOND REPORT

February 5, 2026
 IGI Report Number **LG772636990**
 Description **LABORATORY GROWN DIAMOND**
 Shape and Cutting Style **TRIANGULAR MODIFIED BRILLIANT**
 Measurements **6.28 X 6.27 X 3.28 MM**

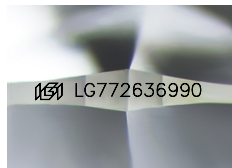
GRADING RESULTS

Carat Weight **0.85 CARAT**
 Color Grade **E**
 Clarity Grade **VVS 2**

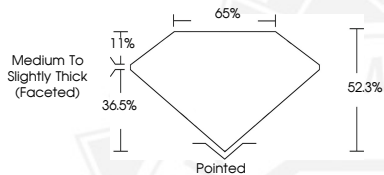
ADDITIONAL GRADING INFORMATION

Polish **VERY GOOD**
 Symmetry **VERY GOOD**
 Fluorescence **NONE**
 Inscription(s) **IGI LG772636990**

Comments: This Laboratory Grown Diamond was created by
 Chemical Vapor Deposition (CVD) growth process.
 Type IIa



Sample Image Used



February 5, 2026

IGI Report Number **LG772636990**
TRIANGULAR MODIFIED BRILLIANT
LABORATORY GROWN DIAMOND
6.28 X 6.27 X 3.28 MM

Carat Weight **0.85 CARAT**
 Color Grade **E**
 Clarity Grade **VVS 2**
 Polish **VERY GOOD**
 Symmetry **VERY GOOD**
 Fluorescence **NONE**
 Inscription(s) **IGI LG772636990**

Comments: This Laboratory Grown
 Diamond was created by
 Chemical Vapor Deposition (CVD)
 growth process. Type IIa



February 5, 2026

IGI Report Number **LG772636990**
TRIANGULAR MODIFIED BRILLIANT
LABORATORY GROWN DIAMOND
6.28 X 6.27 X 3.28 MM

Carat Weight **0.85 CARAT**
 Color Grade **E**
 Clarity Grade **VVS 2**
 Polish **VERY GOOD**
 Symmetry **VERY GOOD**
 Fluorescence **NONE**
 Inscription(s) **IGI LG772636990**

Comments: This Laboratory Grown
 Diamond was created by
 Chemical Vapor Deposition (CVD)
 growth process. Type IIa



THIS DOCUMENT WAS PRODUCED WITH THE FOLLOWING SECURITY MEASURES: SPECIAL DOCUMENT PAPER, INK SCREENS, WATERMARK, BACKGROUND DESIGNS, HOLOGRAM AND OTHER SECURITY FEATURES NOT LISTED AND DO EXCEED DOCUMENT SECURITY INDUSTRY GUIDELINES.