



ELECTRONIC COPY

LG772629324
Report verification at igi.org



March 2, 2026

IGI Report Number **LG772629324**

Description **LABORATORY GROWN DIAMOND**

Shape and Cutting Style **CUT CORNERED
RECTANGULAR MODIFIED
BRILLIANT**

Measurements **12.39 X 8.32 X 5.77 MM**

GRADING RESULTS

Carat Weight **5.01 CARATS**

Color Grade **F**

Clarity Grade **VVS 2**

March 2, 2026

IGI Report Number **LG772629324**

Description **LABORATORY GROWN DIAMOND**

Shape and Cutting Style **CUT CORNERED RECTANGULAR
MODIFIED BRILLIANT**

Measurements **12.39 X 8.32 X 5.77 MM**

GRADING RESULTS

Carat Weight **5.01 CARATS**

Color Grade **F**

Clarity Grade **VVS 2**

ADDITIONAL GRADING INFORMATION

Polish **EXCELLENT**

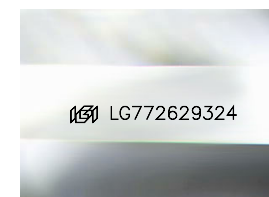
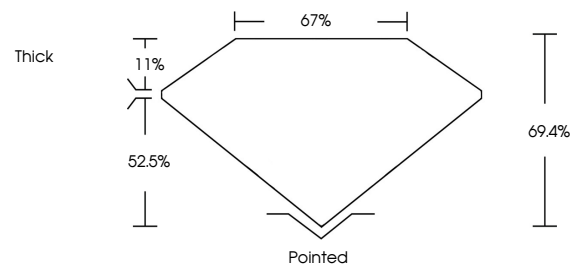
Symmetry **EXCELLENT**

Fluorescence **NONE**

Inscription(s) **IGI LG772629324**

Comments: This Laboratory Grown Diamond was created by Chemical Vapor Deposition (CVD) growth process. Type IIa

PROPORTIONS



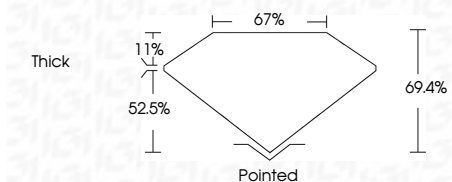
Sample Image Used

COLOR

D E F G H I J Faint Very Light Light

CLARITY

| FL | IF | VVS ¹⁻² | VS ¹⁻² | SI ¹⁻² | I ¹⁻³ |
|----------|---------------------|-----------------------------|------------------------|-------------------|------------------|
| Flawless | Internally Flawless | Very Very Slightly Included | Very Slightly Included | Slightly Included | Included |



ADDITIONAL GRADING INFORMATION

Polish **EXCELLENT**

Symmetry **EXCELLENT**

Fluorescence **NONE**

Inscription(s) **IGI LG772629324**

Comments: This Laboratory Grown Diamond was created by Chemical Vapor Deposition (CVD) growth process. Type IIa



IGI



March 2, 2026
IGI Report No LG772629324
CUT CORNERED RECT. MODIFIED BRILLIANT
12.39 X 8.32 X 5.77 MM
5.01 CARATS
F
VVS 2
69.4%
67%
Thick
Pointed
EXCELLENT
EXCELLENT
NONE
IGI LG772629324

Comments: This Laboratory Grown Diamond was created by Chemical Vapor Deposition (CVD) growth process. Type IIa