



ELECTRONIC COPY

LG772626469
Report verification at igi.org



March 4, 2026
IGI Report Number LG772626469
Description LABORATORY GROWN DIAMOND
Shape and Cutting Style ROUND BRILLIANT
Measurements 7.45 - 7.50 X 4.56 MM
GRADING RESULTS
Carat Weight 1.55 CARAT
Color Grade FANCY INTENSE PINK
Clarity Grade VVS 2
Cut Grade IDEAL

March 4, 2026
IGI Report Number LG772626469
Description LABORATORY GROWN DIAMOND
Shape and Cutting Style ROUND BRILLIANT
Measurements 7.45 - 7.50 X 4.56 MM

GRADING RESULTS

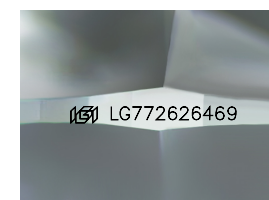
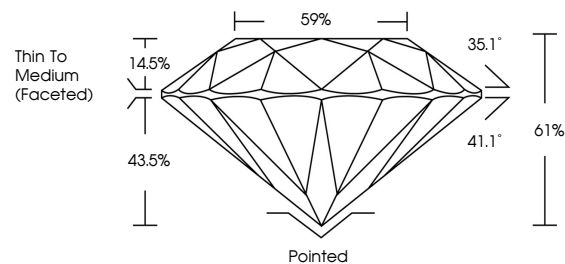
Carat Weight 1.55 CARAT
Color Grade FANCY INTENSE PINK
Clarity Grade VVS 2
Cut Grade IDEAL

ADDITIONAL GRADING INFORMATION

Polish EXCELLENT
Symmetry EXCELLENT
Fluorescence STRONG
Inscription(s) IGI LG772626469

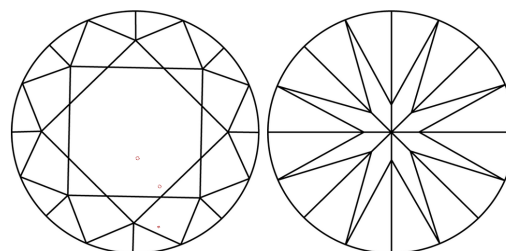
Comments: This Laboratory Grown Diamond was created by Chemical Vapor Deposition (CVD) growth process.
Indications of post-growth treatment.

PROPORTIONS



Sample Image Used

CLARITY CHARACTERISTICS



KEY TO SYMBOLS

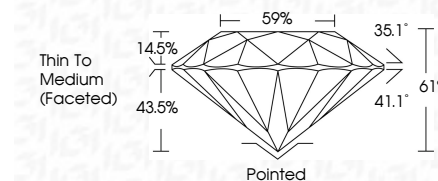
Red symbols indicate internal characteristics.
Green symbols indicate external characteristics.

COLOR

D E F G H I J Faint Very Light Light

CLARITY

FL IF VVS 1-2 VS 1-2 SI 1-2 I 1-3
Flawless Internally Flawless Very Very Slightly Included Very Slightly Included Slightly Included Included



ADDITIONAL GRADING INFORMATION

Polish EXCELLENT
Symmetry EXCELLENT
Fluorescence STRONG
Inscription(s) IGI LG772626469
Comments: This Laboratory Grown Diamond was created by Chemical Vapor Deposition (CVD) growth process.
Indications of post-growth treatment.



March 4, 2026
IGI Report No LG772626469
ROUND BRILLIANT
1.55 CARAT
FANCY INTENSE PINK
VVS 2
IDEAL
61%
Thin To Medium (Faceted)
Pointed
EXCELLENT
EXCELLENT
STRONG
IGI LG772626469
Comments: This Laboratory Grown Diamond was created by Chemical Vapor Deposition (CVD) growth process.
Indications of post-growth treatment.