



**ELECTRONIC COPY**

LG772625789  
Report verification at igi.org



February 24, 2026

IGI Report Number **LG772625789**

Description **LABORATORY GROWN DIAMOND**

Shape and Cutting Style **ROUND BRILLIANT**

Measurements **11.05 - 11.10 X 6.72 MM**

**GRADING RESULTS**

Carat Weight **5.03 CARATS**

Color Grade **G**

Clarity Grade **VS 2**

Cut Grade **EXCELLENT**

February 24, 2026

IGI Report Number **LG772625789**

Description **LABORATORY GROWN DIAMOND**

Shape and Cutting Style **ROUND BRILLIANT**

Measurements **11.05 - 11.10 X 6.72 MM**

**GRADING RESULTS**

Carat Weight **5.03 CARATS**

Color Grade **G**

Clarity Grade **VS 2**

Cut Grade **EXCELLENT**

**ADDITIONAL GRADING INFORMATION**

Polish **EXCELLENT**

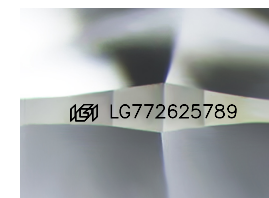
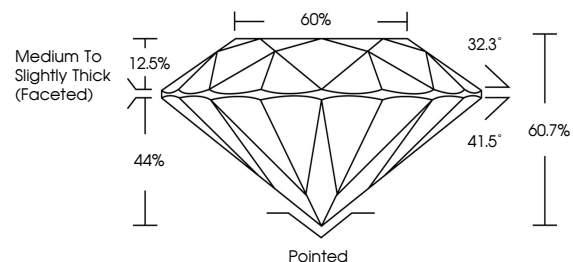
Symmetry **EXCELLENT**

Fluorescence **NONE**

Inscription(s) **IGI LG772625789**

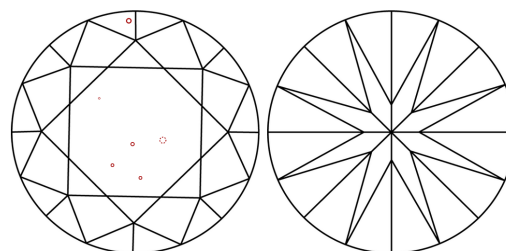
Comments: This Laboratory Grown Diamond was created by Chemical Vapor Deposition (CVD) growth process. Type IIa

**PROPORTIONS**



Sample Image Used

**CLARITY CHARACTERISTICS**



**KEY TO SYMBOLS**

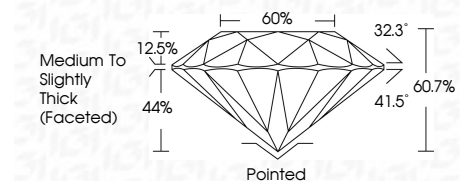
Red symbols indicate internal characteristics.  
Green symbols indicate external characteristics.

**COLOR**

D E F G H I J Faint Very Light Light

**CLARITY**

FL	IF	VS <sup>1-2</sup>	VS <sup>1-2</sup>	SI <sup>1-2</sup>	I <sup>1-3</sup>
Flawless	Internally Flawless	Very Very Slightly Included	Very Slightly Included	Slightly Included	Included



**ADDITIONAL GRADING INFORMATION**

Polish **EXCELLENT**

Symmetry **EXCELLENT**

Fluorescence **NONE**

Inscription(s) **IGI LG772625789**

Comments: This Laboratory Grown Diamond was created by Chemical Vapor Deposition (CVD) growth process. Type IIa



**IGI**



February 24, 2026  
IGI Report No LG772625789  
ROUND BRILLIANT

5.03 CARATS  
G

11.05 - 11.10 X 6.72 MM

Color Grade  
VS 2

Clarity Grade  
EXCELLENT

Depth  
60.7%

Table  
60%

Grille  
Medium To Slightly Thick (Faceted)

Culet  
Pointed

Polish  
EXCELLENT

Symmetry  
EXCELLENT

Fluorescence  
NONE

Inscription(s)  
IGI LG772625789

Comments: This Laboratory Grown Diamond was created by Chemical Vapor Deposition (CVD) growth process. Type IIa