



**ELECTRONIC COPY**

LG772625566  
Report verification at igi.org



February 24, 2026

IGI Report Number **LG772625566**

Description **LABORATORY GROWN DIAMOND**

Shape and Cutting Style **ROUND BRILLIANT**

Measurements **9.93 - 9.97 X 5.92 MM**

**GRADING RESULTS**

Carat Weight **3.60 CARATS**

Color Grade **E**

Clarity Grade **VVS 2**

Cut Grade **IDEAL**

February 24, 2026

IGI Report Number **LG772625566**

Description **LABORATORY GROWN DIAMOND**

Shape and Cutting Style **ROUND BRILLIANT**

Measurements **9.93 - 9.97 X 5.92 MM**

**GRADING RESULTS**

Carat Weight **3.60 CARATS**

Color Grade **E**

Clarity Grade **VVS 2**

Cut Grade **IDEAL**

**ADDITIONAL GRADING INFORMATION**

Polish **EXCELLENT**

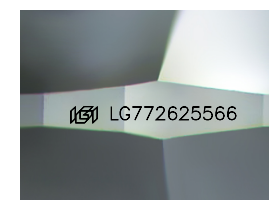
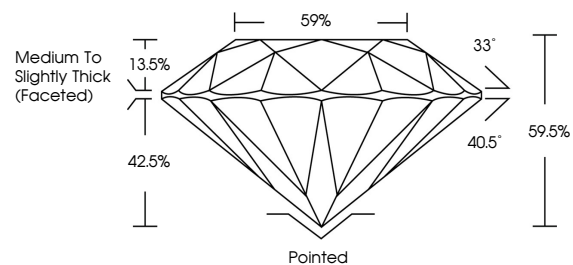
Symmetry **EXCELLENT**

Fluorescence **NONE**

Inscription(s) **IGI LG772625566**

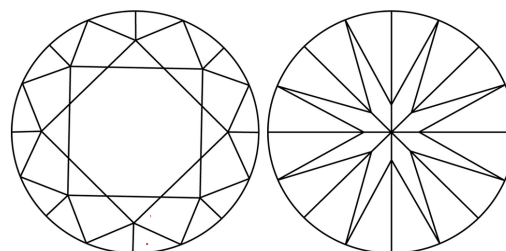
Comments: This Laboratory Grown Diamond was created by Chemical Vapor Deposition (CVD) growth process. Type IIa

**PROPORTIONS**



Sample Image Used

**CLARITY CHARACTERISTICS**



**KEY TO SYMBOLS**

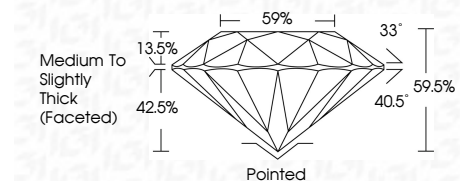
Red symbols indicate internal characteristics.  
Green symbols indicate external characteristics.

**COLOR**

D E F G H I J Faint Very Light Light

**CLARITY**

| FL       | IF                  | VVS <sup>1-2</sup>          | VS <sup>1-2</sup>      | SI <sup>1-2</sup> | I <sup>1-3</sup> |
|----------|---------------------|-----------------------------|------------------------|-------------------|------------------|
| Flawless | Internally Flawless | Very Very Slightly Included | Very Slightly Included | Slightly Included | Included         |



**ADDITIONAL GRADING INFORMATION**

Polish **EXCELLENT**

Symmetry **EXCELLENT**

Fluorescence **NONE**

Inscription(s) **IGI LG772625566**

Comments: This Laboratory Grown Diamond was created by Chemical Vapor Deposition (CVD) growth process. Type IIa



**IGI**



|                           |                           |                       |             |               |           |       |                                    |         |           |           |              |                 |
|---------------------------|---------------------------|-----------------------|-------------|---------------|-----------|-------|------------------------------------|---------|-----------|-----------|--------------|-----------------|
| February 24, 2026         | IGI Report No LG772625566 | 3.60 CARATS           | E           | VVS 2         | IDEAL     | 59%   | Medium To Slightly Thick (Faceted) | Pointed | EXCELLENT | EXCELLENT | NONE         | IGI LG772625566 |
| IGI Report No LG772625566 | ROUND BRILLIANT           | 9.93 - 9.97 X 5.92 MM | Color Grade | Clarity Grade | Cut Grade | Depth | Table                              | Girdle  | Polish    | Symmetry  | Fluorescence | Inscription(s)  |

Comments: This Laboratory Grown Diamond was created by Chemical Vapor Deposition (CVD) growth process. Type IIa