



ELECTRONIC COPY

LG772623639
Report verification at igi.org



February 19, 2026
IGI Report Number **LG772623639**
Description **LABORATORY GROWN DIAMOND**
Shape and Cutting Style **CUT CORNERED
RECTANGULAR MODIFIED
BRILLIANT**
Measurements **11.17 X 7.71 X 5.22 MM**
GRADING RESULTS
Carat Weight **4.29 CARATS**
Color Grade **FANCY INTENSE YELLOW**
Clarity Grade **VS 1**

February 19, 2026
IGI Report Number **LG772623639**
Description **LABORATORY GROWN DIAMOND**
Shape and Cutting Style **CUT CORNERED RECTANGULAR
MODIFIED BRILLIANT**
Measurements **11.17 X 7.71 X 5.22 MM**

GRADING RESULTS

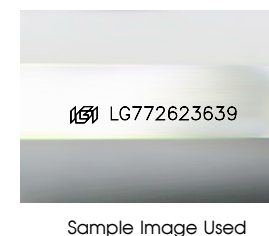
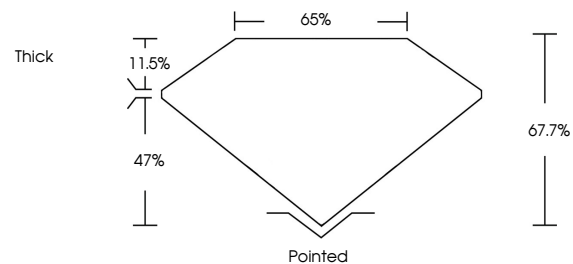
Carat Weight **4.29 CARATS**
Color Grade **FANCY INTENSE YELLOW**
Clarity Grade **VS 1**

ADDITIONAL GRADING INFORMATION

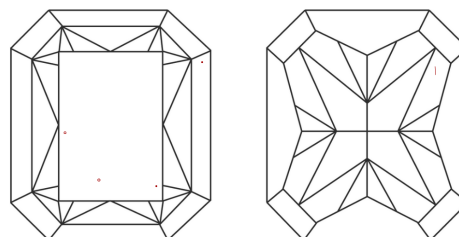
Polish **EXCELLENT**
Symmetry **EXCELLENT**
Fluorescence **NONE**
Inscription(s) **IGI LG772623639**

Comments: This Laboratory Grown Diamond was created by Chemical Vapor Deposition (CVD) growth process.

PROPORTIONS



CLARITY CHARACTERISTICS



KEY TO SYMBOLS

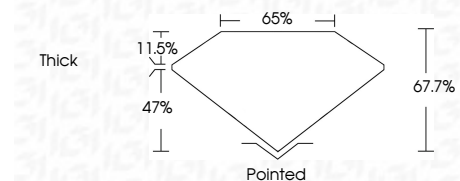
Red symbols indicate internal characteristics.
Green symbols indicate external characteristics.

COLOR

D E F G H I J Faint Very Light Light

CLARITY

FL	IF	VS ¹⁻²	VS ¹⁻²	SI ¹⁻²	I ¹⁻³
Flawless	Internally Flawless	Very Very Slightly Included	Very Slightly Included	Slightly Included	Included



ADDITIONAL GRADING INFORMATION

Polish **EXCELLENT**
Symmetry **EXCELLENT**
Fluorescence **NONE**
Inscription(s) **IGI LG772623639**
Comments: This Laboratory Grown Diamond was created by Chemical Vapor Deposition (CVD) growth process.



February 19, 2026
IGI Report No **LG772623639**
CUT CORNERED RECT. MODIFIED BRILLIANT
4.29 CARATS
Carat Weight **FANCY INTENSE YELLOW**
Color Grade **VS 1**
Clarity Grade **67.7%**
Depth **65%**
Table **Thick**
Girdle **Pointed**
Culet **EXCELLENT**
Polish **EXCELLENT**
Symmetry **EXCELLENT**
Fluorescence **NONE**
Inscription(s) **IGI LG772623639**
Comments: This Laboratory Grown Diamond was created by Chemical Vapor Deposition (CVD) growth process.