



ELECTRONIC COPY

LABORATORY GROWN DIAMOND REPORT

February 26, 2026
IGI Report Number **LG772621667**
Description **LABORATORY GROWN DIAMOND**
Shape and Cutting Style **CUT CORNERED RECTANGULAR MODIFIED BRILLIANT**
Measurements **7.76 X 5.27 X 3.81 MM**

GRADING RESULTS

Carat Weight **1.50 CARAT**
Color Grade **FANCY VIVID YELLOW**
Clarity Grade **SI 1**

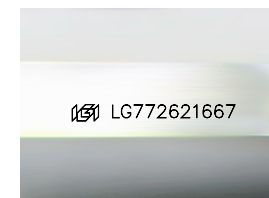
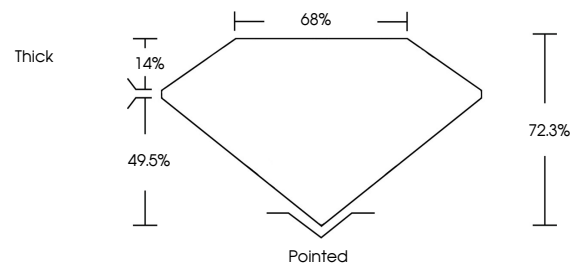
ADDITIONAL GRADING INFORMATION

Polish **EXCELLENT**
Symmetry **EXCELLENT**
Fluorescence **NONE**

Inscription(s) **IGI LG772621667**

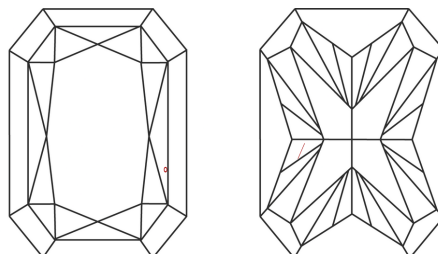
Comments: This Laboratory Grown Diamond was created by Chemical Vapor Deposition (CVD) growth process.

PROPORTIONS



Sample Image Used

CLARITY CHARACTERISTICS



KEY TO SYMBOLS

Red symbols indicate internal characteristics.
Green symbols indicate external characteristics.

COLOR

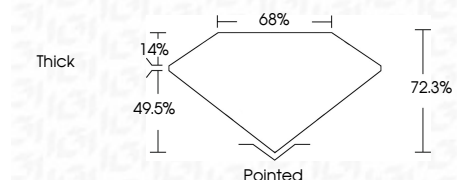
D E F G H I J Faint Very Light Light

CLARITY

| FL | IF | VS ¹⁻² | VS ¹⁻² | SI ¹⁻² | I ¹⁻³ |
|----------|---------------------|-----------------------------|------------------------|-------------------|------------------|
| Flawless | Internally Flawless | Very Very Slightly Included | Very Slightly Included | Slightly Included | Included |



February 26, 2026
IGI Report Number **LG772621667**
Description **LABORATORY GROWN DIAMOND**
Shape and Cutting Style **CUT CORNERED RECTANGULAR MODIFIED BRILLIANT**
Measurements **7.76 X 5.27 X 3.81 MM**
GRADING RESULTS
Carat Weight **1.50 CARAT**
Color Grade **FANCY VIVID YELLOW**
Clarity Grade **SI 1**



ADDITIONAL GRADING INFORMATION

Polish **EXCELLENT**
Symmetry **EXCELLENT**
Fluorescence **NONE**
Inscription(s) **IGI LG772621667**

Comments: This Laboratory Grown Diamond was created by Chemical Vapor Deposition (CVD) growth process.



IGI



February 26, 2026
IGI Report No. LG772621667
CUT CORNERED RECT. MODIFIED BRILLIANT
1.50 CARAT
FANCY VIVID YELLOW
SI 1
72.3%
68%
Thick
Pointed
EXCELLENT
EXCELLENT
NONE
IGI LG772621667

Comments: This Laboratory Grown Diamond was created by Chemical Vapor Deposition (CVD) growth process.