



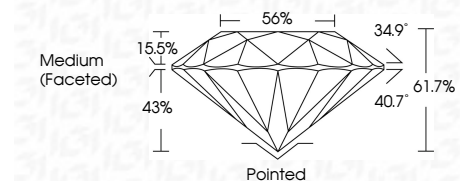
ELECTRONIC COPY

LG772621054
Report verification at igi.org



February 20, 2026
IGI Report Number **LG772621054**
Description **LABORATORY GROWN DIAMOND**
Shape and Cutting Style **ROUND BRILLIANT**
Measurements **8.17 - 8.20 X 5.05 MM**

GRADING RESULTS
Carat Weight **2.08 CARATS**
Color Grade **D**
Clarity Grade **VS 1**
Cut Grade **IDEAL**



ADDITIONAL GRADING INFORMATION
Polish **EXCELLENT**
Symmetry **EXCELLENT**
Fluorescence **NONE**
Inscription(s) **IGI LG772621054**
Comments: This Laboratory Grown Diamond was created by Chemical Vapor Deposition (CVD) growth process. Type IIa



February 20, 2026
IGI Report No LG772621054
ROUND BRILLIANT
8.17 - 8.20 X 5.05 MM
2.08 CARATS
D
VS 1
IDEAL
61.7%
56%
Medium (Faceted)
Pointed
EXCELLENT
EXCELLENT
NONE
IGI LG772621054
Comments: This Laboratory Grown Diamond was created by Chemical Vapor Deposition (CVD) growth process. Type IIa

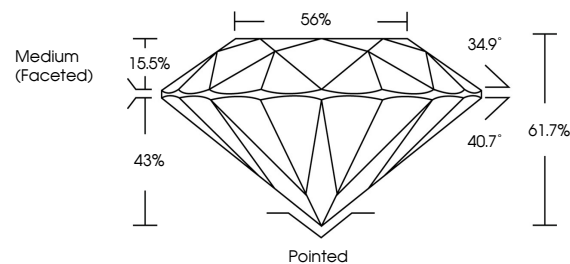
February 20, 2026
IGI Report Number **LG772621054**
Description **LABORATORY GROWN DIAMOND**
Shape and Cutting Style **ROUND BRILLIANT**
Measurements **8.17 - 8.20 X 5.05 MM**

GRADING RESULTS
Carat Weight **2.08 CARATS**
Color Grade **D**
Clarity Grade **VS 1**
Cut Grade **IDEAL**

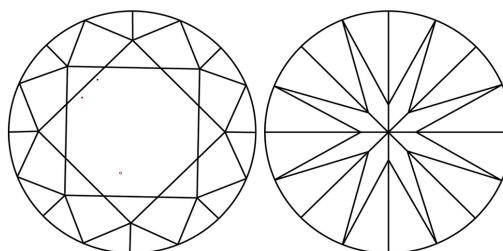
ADDITIONAL GRADING INFORMATION
Polish **EXCELLENT**
Symmetry **EXCELLENT**
Fluorescence **NONE**
Inscription(s) **IGI LG772621054**

Comments: This Laboratory Grown Diamond was created by Chemical Vapor Deposition (CVD) growth process. Type IIa

PROPORTIONS

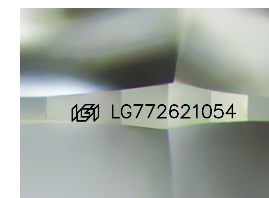


CLARITY CHARACTERISTICS



KEY TO SYMBOLS

Red symbols indicate internal characteristics.
Green symbols indicate external characteristics.



Sample Image Used

COLOR

D E F G H I J Faint Very Light Light

CLARITY

FL	IF	VS ¹⁻²	VS ¹⁻²	SI ¹⁻²	I ¹⁻³
Flawless	Internally Flawless	Very Very Slightly Included	Very Slightly Included	Slightly Included	Included

