



ELECTRONIC COPY

LG772620272
Report verification at igi.org



February 17, 2026

IGI Report Number **LG772620272**

Description **LABORATORY GROWN DIAMOND**

Shape and Cutting Style **ROUND BRILLIANT**

Measurements **8.00 - 8.04 X 5.04 MM**

GRADING RESULTS

Carat Weight **2.00 CARATS**

Color Grade **D**

Clarity Grade **VS 1**

Cut Grade **EXCELLENT**

February 17, 2026

IGI Report Number **LG772620272**

Description **LABORATORY GROWN DIAMOND**

Shape and Cutting Style **ROUND BRILLIANT**

Measurements **8.00 - 8.04 X 5.04 MM**

GRADING RESULTS

Carat Weight **2.00 CARATS**

Color Grade **D**

Clarity Grade **VS 1**

Cut Grade **EXCELLENT**

ADDITIONAL GRADING INFORMATION

Polish **EXCELLENT**

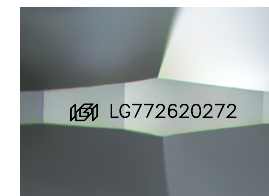
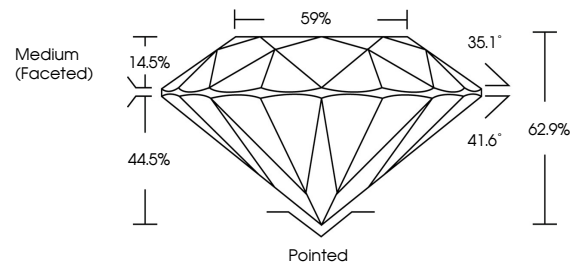
Symmetry **EXCELLENT**

Fluorescence **NONE**

Inscription(s) **IGI LG772620272**

Comments: This Laboratory Grown Diamond was created by Chemical Vapor Deposition (CVD) growth process. Type IIa

PROPORTIONS



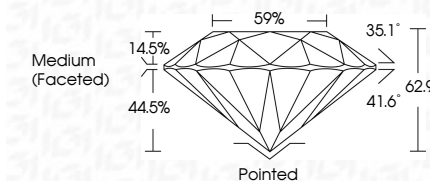
Sample Image Used

COLOR

D E F G H I J Faint Very Light Light

CLARITY

FL	IF	VS ¹⁻²	VS ¹⁻²	SI ¹⁻²	I ¹⁻³
Flawless	Internally Flawless	Very Very Slightly Included	Very Slightly Included	Slightly Included	Included



ADDITIONAL GRADING INFORMATION

Polish **EXCELLENT**

Symmetry **EXCELLENT**

Fluorescence **NONE**

Inscription(s) **IGI LG772620272**

Comments: This Laboratory Grown Diamond was created by Chemical Vapor Deposition (CVD) growth process. Type IIa



IGI



February 17, 2026	IGI Report No LG772620272	2.00 CARATS	D	VS 1	EXCELLENT	62.9%	59%	Medium (Faceted)	Pointed	EXCELLENT	EXCELLENT	NONE	IGI LG772620272
8.00 - 8.04 X 5.04 MM	ROUND BRILLIANT	Carat Weight	Color Grade	Clarity Grade	Cut Grade	Depth	Table	Girdle	Culet	Polish	Symmetry	Fluorescence	Inscription(s)

Comments: This Laboratory Grown Diamond was created by Chemical Vapor Deposition (CVD) growth process. Type IIa