



ELECTRONIC COPY

LG772619751
Report verification at igi.org



February 20, 2026
IGI Report Number **LG772619751**
Description **LABORATORY GROWN DIAMOND**
Shape and Cutting Style **CUT CORNERED
RECTANGULAR MODIFIED
BRILLIANT**
Measurements **13.41 X 9.28 X 6.24 MM**
GRADING RESULTS
Carat Weight **7.01 CARATS**
Color Grade **FANCY VIVID PINK**
Clarity Grade **VVS 2**

February 20, 2026
IGI Report Number **LG772619751**
Description **LABORATORY GROWN DIAMOND**
Shape and Cutting Style **CUT CORNERED RECTANGULAR
MODIFIED BRILLIANT**
Measurements **13.41 X 9.28 X 6.24 MM**

GRADING RESULTS

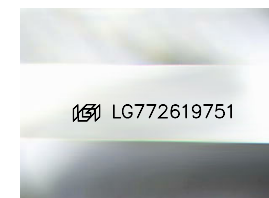
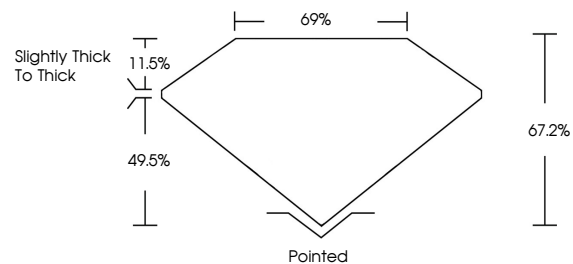
Carat Weight **7.01 CARATS**
Color Grade **FANCY VIVID PINK**
Clarity Grade **VVS 2**

ADDITIONAL GRADING INFORMATION

Polish **EXCELLENT**
Symmetry **EXCELLENT**
Fluorescence **STRONG**
Inscription(s) **IGI LG772619751**

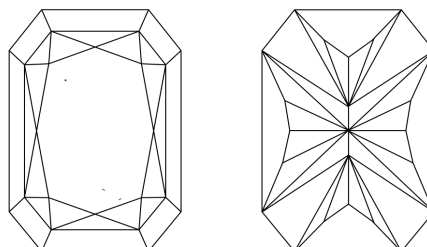
Comments: This Laboratory Grown Diamond was created by Chemical Vapor Deposition (CVD) growth process. Indications of post-growth treatment.

PROPORTIONS



Sample Image Used

CLARITY CHARACTERISTICS



KEY TO SYMBOLS

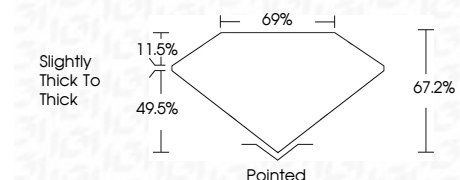
Red symbols indicate internal characteristics.
Green symbols indicate external characteristics.

COLOR

D E F G H I J Faint Very Light Light

CLARITY

FL	IF	VVS ¹⁻²	VS ¹⁻²	SI ¹⁻²	I ¹⁻³
Flawless	Internally Flawless	Very Very Slightly Included	Very Slightly Included	Slightly Included	Included



ADDITIONAL GRADING INFORMATION

Polish **EXCELLENT**
Symmetry **EXCELLENT**
Fluorescence **STRONG**
Inscription(s) **IGI LG772619751**
Comments: This Laboratory Grown Diamond was created by Chemical Vapor Deposition (CVD) growth process. Indications of post-growth treatment.



IGI



February 20, 2026
IGI Report No. LG772619751
CUT CORNERED RECT. MODIFIED BRILLIANT
13.41 X 9.28 X 6.24 MM
7.01 CARATS
FANCY VIVID PINK
VVS 2
67.2%
69%
Slightly thick to thick
Pointed
EXCELLENT
EXCELLENT
STRONG
IGI LG772619751

Comments: This Laboratory Grown Diamond was created by Chemical Vapor Deposition (CVD) growth process. Indications of post-growth treatment.