



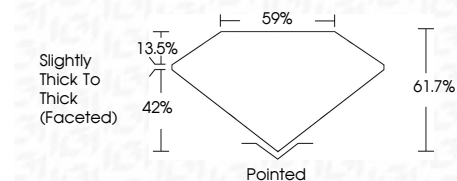
ELECTRONIC COPY

LG772619731
Report verification at igi.org



February 18, 2026
IGI Report Number **LG772619731**
Description **LABORATORY GROWN DIAMOND**
Shape and Cutting Style **OVAL MODIFIED BRILLIANT**
Measurements **9.00 X 6.42 X 3.96 MM**

GRADING RESULTS
Carat Weight **1.72 CARAT**
Color Grade **FANCY VIVID GREEN**
Clarity Grade **VVS 2**



ADDITIONAL GRADING INFORMATION
Polish **EXCELLENT**
Symmetry **VERY GOOD**
Fluorescence **NONE**
Inscription(s) **IGI LG772619731**
Comments: This Laboratory Grown Diamond was created by Chemical Vapor Deposition (CVD) growth process. Indications of post-growth treatment.



February 18, 2026
IGI Report No LG772619731
OVAL MODIFIED BRILLIANT
9.00 X 6.42 X 3.96 MM
1.72 CARAT
FANCY VIVID GREEN
VVS 2
61.7%
42%
Slightly Thick To Thick (Faceted)
Pointed
EXCELLENT
VERY GOOD
NONE
IGI LG772619731
Comments: This Laboratory Grown Diamond was created by Chemical Vapor Deposition (CVD) growth process. Indications of post-growth treatment.

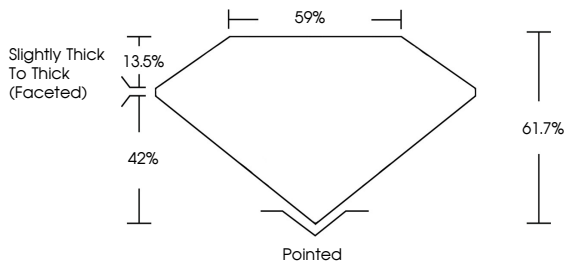
February 18, 2026
IGI Report Number **LG772619731**
Description **LABORATORY GROWN DIAMOND**
Shape and Cutting Style **OVAL MODIFIED BRILLIANT**
Measurements **9.00 X 6.42 X 3.96 MM**

GRADING RESULTS
Carat Weight **1.72 CARAT**
Color Grade **FANCY VIVID GREEN**
Clarity Grade **VVS 2**

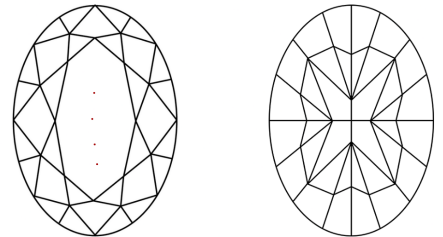
ADDITIONAL GRADING INFORMATION
Polish **EXCELLENT**
Symmetry **VERY GOOD**
Fluorescence **NONE**
Inscription(s) **IGI LG772619731**

Comments: This Laboratory Grown Diamond was created by Chemical Vapor Deposition (CVD) growth process. Indications of post-growth treatment.

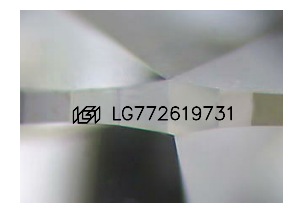
PROPORTIONS



CLARITY CHARACTERISTICS



KEY TO SYMBOLS
Red symbols indicate internal characteristics.
Green symbols indicate external characteristics.



Sample Image Used

COLOR

D	E	F	G	H	I	J	Faint	Very Light	Light
---	---	---	---	---	---	---	-------	------------	-------

CLARITY

FL	IF	VVS ¹⁻²	VS ¹⁻²	SI ¹⁻²	I ¹⁻³
Flawless	Internally Flawless	Very Very Slightly Included	Very Slightly Included	Slightly Included	Included

