



ELECTRONIC COPY

LG772619506
Report verification at igi.org



February 20, 2026

IGI Report Number **LG772619506**

Description **LABORATORY GROWN DIAMOND**

Shape and Cutting Style **CUT CORNERED
RECTANGULAR MODIFIED
BRILLIANT**

Measurements **12.53 X 8.54 X 5.55 MM**

GRADING RESULTS

Carat Weight **5.08 CARATS**

Color Grade **F**

Clarity Grade **VVS 2**

February 20, 2026

IGI Report Number **LG772619506**

Description **LABORATORY GROWN DIAMOND**

Shape and Cutting Style **CUT CORNERED RECTANGULAR
MODIFIED BRILLIANT**

Measurements **12.53 X 8.54 X 5.55 MM**

GRADING RESULTS

Carat Weight **5.08 CARATS**

Color Grade **F**

Clarity Grade **VVS 2**

ADDITIONAL GRADING INFORMATION

Polish **EXCELLENT**

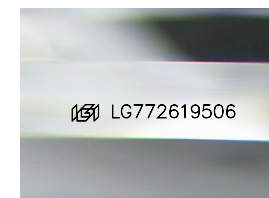
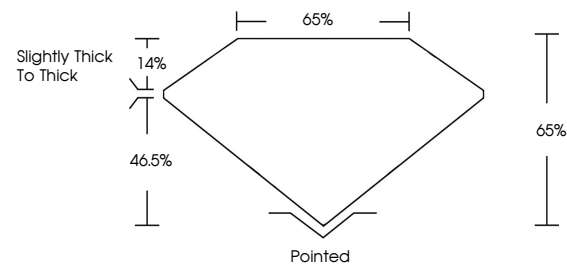
Symmetry **EXCELLENT**

Fluorescence **NONE**

Inscription(s) **IGI LG772619506**

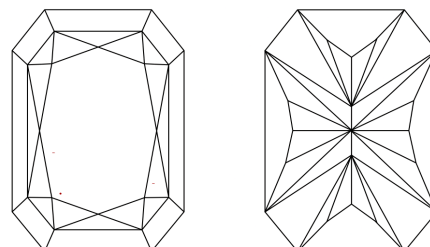
Comments: This Laboratory Grown Diamond was created by Chemical Vapor Deposition (CVD) growth process. Type IIa

PROPORTIONS



Sample Image Used

CLARITY CHARACTERISTICS



KEY TO SYMBOLS

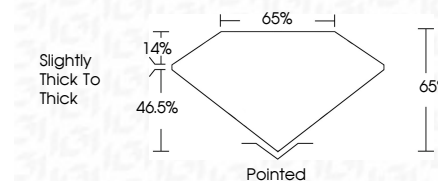
Red symbols indicate internal characteristics.
Green symbols indicate external characteristics.

COLOR

D E F G H I J Faint Very Light Light

CLARITY

FL	IF	VVS ¹⁻²	VS ¹⁻²	SI ¹⁻²	I ¹⁻³
Flawless	Internally Flawless	Very Very Slightly Included	Very Slightly Included	Slightly Included	Included



ADDITIONAL GRADING INFORMATION

Polish **EXCELLENT**

Symmetry **EXCELLENT**

Fluorescence **NONE**

Inscription(s) **IGI LG772619506**

Comments: This Laboratory Grown Diamond was created by Chemical Vapor Deposition (CVD) growth process. Type IIa



IGI



February 20, 2026
IGI Report No LG772619506
CUT CORNERED RECT. MODIFIED BRILLIANT
12.53 X 8.54 X 5.55 MM
5.08 CARATS
F
VVS 2
65%
65%
Slightly thick to thick
Pointed
EXCELLENT
EXCELLENT
NONE
IGI LG772619506
Comments: This Laboratory Grown Diamond was created by Chemical Vapor Deposition (CVD) growth process. Type IIa