



ELECTRONIC COPY

LABORATORY GROWN DIAMOND REPORT

February 17, 2026  
IGI Report Number LG772617823  
Description LABORATORY GROWN DIAMOND  
Shape and Cutting Style CUT CORNERED RECTANGULAR MIXED CUT  
Measurements 8.54 X 6.12 X 4.23 MM

GRADING RESULTS

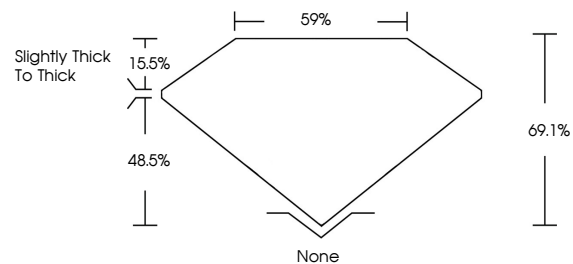
Carat Weight 2.10 CARATS  
Color Grade FANCY INTENSE YELLOW  
Clarity Grade SI 1

ADDITIONAL GRADING INFORMATION

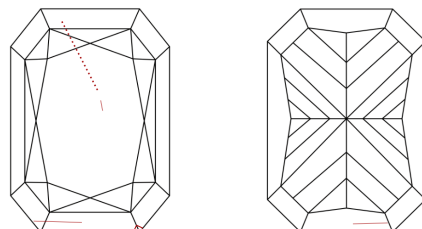
Polish EXCELLENT  
Symmetry EXCELLENT  
Fluorescence NONE  
Inscription(s) LG772617823

Comments: This Laboratory Grown Diamond was created by Chemical Vapor Deposition (CVD) growth process.

PROPORTIONS

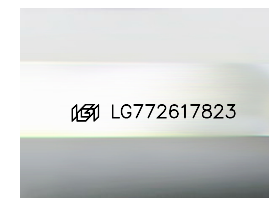


CLARITY CHARACTERISTICS



KEY TO SYMBOLS

Red symbols indicate internal characteristics.  
Green symbols indicate external characteristics.



Sample Image Used

COLOR

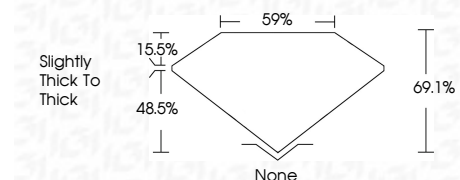
D E F G H I J Faint Very Light Light

CLARITY

FL IF VS<sup>1-2</sup> VS<sup>1-2</sup> SI<sup>1-2</sup> I<sup>1-3</sup>  
Flawless Internally Flawless Very Very Slightly Included Very Slightly Included Slightly Included Included



February 17, 2026  
IGI Report Number LG772617823  
Description LABORATORY GROWN DIAMOND  
Shape and Cutting Style CUT CORNERED RECTANGULAR MIXED CUT  
Measurements 8.54 X 6.12 X 4.23 MM  
GRADING RESULTS  
Carat Weight 2.10 CARATS  
Color Grade FANCY INTENSE YELLOW  
Clarity Grade SI 1



ADDITIONAL GRADING INFORMATION

Polish EXCELLENT  
Symmetry EXCELLENT  
Fluorescence NONE  
Inscription(s) LG772617823  
Comments: This Laboratory Grown Diamond was created by Chemical Vapor Deposition (CVD) growth process.



IGI



February 17, 2026  
IGI Report No LG772617823  
CUT CORNERED RECT. MIXED CUT  
8.54 X 6.12 X 4.23 MM  
2.10 CARATS  
FANCY INTENSE YELLOW  
SI 1  
69.1%  
59%  
Slightly thick to thick  
None  
EXCELLENT  
EXCELLENT  
NONE  
None  
None  
None  
None  
 LG772617823  
Comments: This Laboratory Grown Diamond was created by Chemical Vapor Deposition (CVD) growth process.