



March 23, 2026

IGI Report Number **LG772616254**

**ROUND BRILLIANT
LABORATORY GROWN DIAMOND
4.81 - 4.84 X 2.92 MM**

Carat Weight	0.41 CARAT
Color Grade	F
Clarity Grade	VVS 2
Cut Grade	IDEAL
Polish	EXCELLENT
Symmetry	EXCELLENT
Fluorescence	NONE
Inscription(s)	IGI LG772616254

Comments: This Laboratory Grown Diamond was created by Chemical Vapor Deposition (CVD) growth process. Type IIa

LABORATORY GROWN DIAMOND REPORT

March 23, 2026
IGI Report Number **LG772616254**
Description **LABORATORY GROWN DIAMOND**
Shape and Cutting Style **ROUND BRILLIANT**
Measurements **4.81 - 4.84 X 2.92 MM**

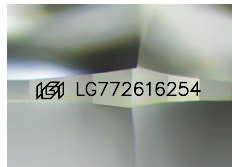
GRADING RESULTS

Carat Weight **0.41 CARAT**
Color Grade **F**
Clarity Grade **VVS 2**
Cut Grade **IDEAL**

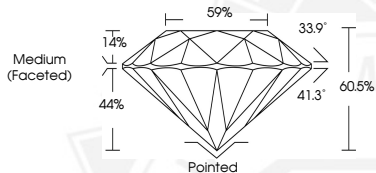
ADDITIONAL GRADING INFORMATION

Polish **EXCELLENT**
Symmetry **EXCELLENT**
Fluorescence **NONE**
Inscription(s) **IGI LG772616254**

Comments: This Laboratory Grown Diamond was created by Chemical Vapor Deposition (CVD) growth process. Type IIa



Sample Image Used



March 23, 2026

IGI Report Number **LG772616254**

**ROUND BRILLIANT
LABORATORY GROWN DIAMOND
4.81 - 4.84 X 2.92 MM**

Carat Weight	0.41 CARAT
Color Grade	F
Clarity Grade	VVS 2
Cut Grade	IDEAL
Polish	EXCELLENT
Symmetry	EXCELLENT
Fluorescence	NONE
Inscription(s)	IGI LG772616254

Comments: This Laboratory Grown Diamond was created by Chemical Vapor Deposition (CVD) growth process. Type IIa



THIS DOCUMENT WAS PRODUCED WITH THE FOLLOWING SECURITY MEASURES: SPECIAL DOCUMENT PAPER, INK SCREENS, WATERMARK, BACKGROUND DESIGNS, HOLOGRAM AND OTHER SECURITY FEATURES NOT LISTED AND DO EXCEED DOCUMENT SECURITY INDUSTRY GUIDELINES.