



March 18, 2026

IGI Report Number **LG772615846**

**ROUND BRILLIANT
LABORATORY GROWN DIAMOND
5.82 - 5.85 X 3.52 MM**

Carat Weight	0.73 CARAT
Color Grade	D
Clarity Grade	VS 2
Cut Grade	IDEAL
Polish	VERY GOOD
Symmetry	VERY GOOD
Fluorescence	NONE
Inscription(s)	IGI LG772615846

Comments: As Grown - No indication of post-growth treatment. This Laboratory Grown Diamond was created by High Pressure High Temperature (HPHT) growth process. Type II

LABORATORY GROWN DIAMOND REPORT

March 18, 2026	
IGI Report Number	LG772615846
Description	LABORATORY GROWN DIAMOND
Shape and Cutting Style	ROUND BRILLIANT
Measurements	5.82 - 5.85 X 3.52 MM

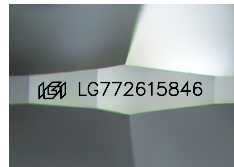
GRADING RESULTS

Carat Weight	0.73 CARAT
Color Grade	D
Clarity Grade	VS 2
Cut Grade	IDEAL

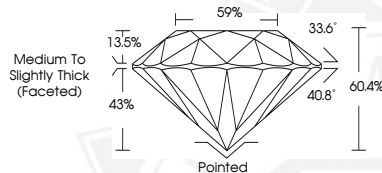
ADDITIONAL GRADING INFORMATION

Polish	VERY GOOD
Symmetry	VERY GOOD
Fluorescence	NONE
Inscription(s)	IGI LG772615846

Comments: As Grown - No indication of post-growth treatment. This Laboratory Grown Diamond was created by High Pressure High Temperature (HPHT) growth process. Type II



Sample Image Used



March 18, 2026

IGI Report Number **LG772615846**

**ROUND BRILLIANT
LABORATORY GROWN DIAMOND
5.82 - 5.85 X 3.52 MM**

Carat Weight	0.73 CARAT
Color Grade	D
Clarity Grade	VS 2
Cut Grade	IDEAL
Polish	VERY GOOD
Symmetry	VERY GOOD
Fluorescence	NONE
Inscription(s)	IGI LG772615846

Comments: As Grown - No indication of post-growth treatment. This Laboratory Grown Diamond was created by High Pressure High Temperature (HPHT) growth process. Type II



THIS DOCUMENT WAS PRODUCED WITH THE FOLLOWING SECURITY MEASURES: SPECIAL DOCUMENT PAPER, INK SCREENS, WATERMARK, BACKGROUND DESIGNS, HOLOGRAM AND OTHER SECURITY FEATURES NOT LISTED AND DO EXCEED DOCUMENT SECURITY INDUSTRY GUIDELINES.