



**INTERNATIONAL  
GEMOLOGICAL  
INSTITUTE**

**ELECTRONIC COPY**



March 2, 2026

IGI Report Number **LG772614648**

**ROUND BRILLIANT**

**LABORATORY GROWN DIAMOND**

**5.53 - 5.56 X 3.37 MM**

Carat Weight **0.63 CARAT**

Color Grade **D**

Clarity Grade **VVS 2**

Cut Grade **IDEAL**

Polish **VERY GOOD**

Symmetry **EXCELLENT**

Fluorescence **NONE**

Inscription(s) **IGI LG772614648**

Comments: HEARTS & ARROWS This Laboratory Grown Diamond was created by Chemical Vapor Deposition (CVD) growth process. Type Ila

**LABORATORY GROWN DIAMOND REPORT**

March 2, 2026

IGI Report Number

**LG772614648**

Description

**LABORATORY GROWN DIAMOND**

Shape and Cutting Style

**ROUND BRILLIANT**

Measurements

**5.53 - 5.56 X 3.37 MM**

**GRADING RESULTS**

Carat Weight

**0.63 CARAT**

Color Grade

**D**

Clarity Grade

**VVS 2**

Cut Grade

**IDEAL**

**ADDITIONAL GRADING INFORMATION**

Polish

**VERY GOOD**

Symmetry

**EXCELLENT**

Fluorescence

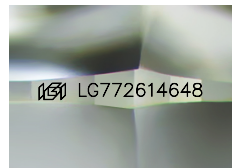
**NONE**

Inscription(s)

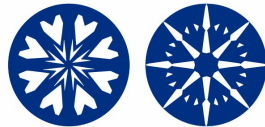
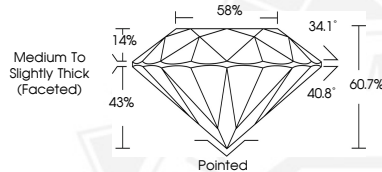
**IGI LG772614648**

Comments: HEARTS & ARROWS

This Laboratory Grown Diamond was created by Chemical Vapor Deposition (CVD) growth process. Type Ila



Sample Image Used



**HEARTS & ARROWS**



March 2, 2026

IGI Report Number **LG772614648**

**ROUND BRILLIANT**

**LABORATORY GROWN DIAMOND**

**5.53 - 5.56 X 3.37 MM**

Carat Weight **0.63 CARAT**

Color Grade **D**

Clarity Grade **VVS 2**

Cut Grade **IDEAL**

Polish **VERY GOOD**

Symmetry **EXCELLENT**

Fluorescence **NONE**

Inscription(s) **IGI LG772614648**

Comments: HEARTS & ARROWS This Laboratory Grown Diamond was created by Chemical Vapor Deposition (CVD) growth process. Type Ila



THIS DOCUMENT WAS PRODUCED WITH THE FOLLOWING SECURITY MEASURES: SPECIAL DOCUMENT PAPER, INK SCREENS, WATERMARK, BACKGROUND DESIGNS, HOLOGRAM AND OTHER SECURITY FEATURES NOT LISTED AND DO EXCEED DOCUMENT SECURITY INDUSTRY GUIDELINES.

For terms & conditions and to verify this report, please visit [www.igi.org](http://www.igi.org)