



**INTERNATIONAL
GEMOLOGICAL
INSTITUTE**

ELECTRONIC COPY

LABORATORY GROWN DIAMOND REPORT

February 16, 2026
 IGI Report Number **LG772614033**
 Description **LABORATORY GROWN DIAMOND**
 Shape and Cutting Style **ROUND BRILLIANT**
 Measurements **4.47 - 4.50 X 2.68 MM**

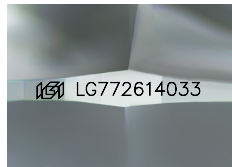
GRADING RESULTS

Carat Weight **0.32 CARAT**
 Color Grade **D**
 Clarity Grade **VS 1**
 Cut Grade **EXCELLENT**

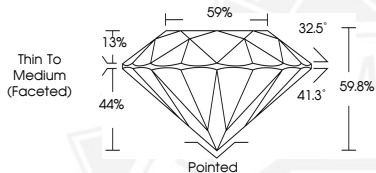
ADDITIONAL GRADING INFORMATION

Polish **EXCELLENT**
 Symmetry **EXCELLENT**
 Fluorescence **NONE**
 Inscription(s) **IGI LG772614033**

Comments: This Laboratory Grown Diamond was created by Chemical Vapor Deposition (CVD) growth process. Type IIa



Sample Image Used



February 16, 2026
 IGI Report Number **LG772614033**
 ROUND BRILLIANT
 LABORATORY GROWN DIAMOND
 4.47 - 4.50 X 2.68 MM
 Carat Weight **0.32 CARAT**
 Color Grade **D**
 Clarity Grade **VS 1**
 Cut Grade **EXCELLENT**
 Polish **EXCELLENT**
 Symmetry **EXCELLENT**
 Fluorescence **NONE**
 Inscription(s) **IGI LG772614033**

Comments: This Laboratory Grown Diamond was created by Chemical Vapor Deposition (CVD) growth process. Type IIa



February 16, 2026
 IGI Report Number **LG772614033**
 ROUND BRILLIANT
 LABORATORY GROWN DIAMOND
 4.47 - 4.50 X 2.68 MM
 Carat Weight **0.32 CARAT**
 Color Grade **D**
 Clarity Grade **VS 1**
 Cut Grade **EXCELLENT**
 Polish **EXCELLENT**
 Symmetry **EXCELLENT**
 Fluorescence **NONE**
 Inscription(s) **IGI LG772614033**

Comments: This Laboratory Grown Diamond was created by Chemical Vapor Deposition (CVD) growth process. Type IIa



THIS DOCUMENT WAS PRODUCED WITH THE FOLLOWING SECURITY MEASURES: SPECIAL DOCUMENT PAPER, INK SCREENS, WATERMARK, BACKGROUND DESIGNS, HOLOGRAM AND OTHER SECURITY FEATURES NOT LISTED AND DO EXCEED DOCUMENT SECURITY INDUSTRY GUIDELINES.

For terms & conditions and to verify this report, please visit www.igi.org