



February 14, 2026

IGI Report Number **LG772613896**

**ROUND BRILLIANT
LABORATORY GROWN DIAMOND
4.40 - 4.44 X 2.65 MM**

Carat Weight	0.31 CARAT
Color Grade	D
Clarity Grade	VS 1
Cut Grade	EXCELLENT
Polish	EXCELLENT
Symmetry	EXCELLENT
Fluorescence	NONE
Inscription(s)	IGI LG772613896

Comments: This Laboratory Grown Diamond was created by Chemical Vapor Deposition (CVD) growth process. Type IIa

LABORATORY GROWN DIAMOND REPORT

February 14, 2026

IGI Report Number **LG772613896**

Description **LABORATORY GROWN DIAMOND**

Shape and Cutting Style **ROUND BRILLIANT**

Measurements **4.40 - 4.44 X 2.65 MM**

GRADING RESULTS

Carat Weight **0.31 CARAT**

Color Grade **D**

Clarity Grade **VS 1**

Cut Grade **EXCELLENT**

ADDITIONAL GRADING INFORMATION

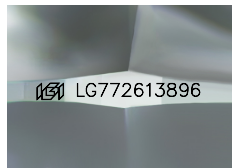
Polish **EXCELLENT**

Symmetry **EXCELLENT**

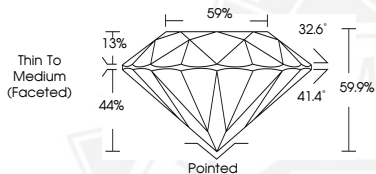
Fluorescence **NONE**

Inscription(s) **IGI LG772613896**

Comments: This Laboratory Grown Diamond was created by Chemical Vapor Deposition (CVD) growth process. Type IIa



Sample Image Used



February 14, 2026

IGI Report Number **LG772613896**

**ROUND BRILLIANT
LABORATORY GROWN DIAMOND
4.40 - 4.44 X 2.65 MM**

Carat Weight	0.31 CARAT
Color Grade	D
Clarity Grade	VS 1
Cut Grade	EXCELLENT
Polish	EXCELLENT
Symmetry	EXCELLENT
Fluorescence	NONE
Inscription(s)	IGI LG772613896

Comments: This Laboratory Grown Diamond was created by Chemical Vapor Deposition (CVD) growth process. Type IIa



THIS DOCUMENT WAS PRODUCED WITH THE FOLLOWING SECURITY MEASURES: SPECIAL DOCUMENT PAPER, INK SCREENS, WATERMARK, BACKGROUND DESIGNS, HOLOGRAM AND OTHER SECURITY FEATURES NOT LISTED AND DO EXCEED DOCUMENT SECURITY INDUSTRY GUIDELINES.