



February 16, 2026
IGI Report Number LG772613888
ROUND BRILLIANT
LABORATORY GROWN DIAMOND
4.30 - 4.32 X 2.73 MM
 Carat Weight **0.31 CARAT**
 Color Grade **E**
 Clarity Grade **VS 1**
 Cut Grade **EXCELLENT**
 Polish **EXCELLENT**
 Symmetry **EXCELLENT**
 Fluorescence **NONE**
 Inscription(s) **IGI LG772613888**
 Comments: This Laboratory Grown Diamond was created by Chemical Vapor Deposition (CVD) growth process. Type IIa

LABORATORY GROWN DIAMOND REPORT

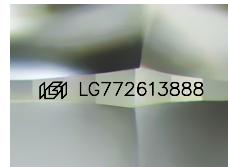
February 16, 2026
 IGI Report Number **LG772613888**
 Description **LABORATORY GROWN DIAMOND**
 Shape and Cutting Style **ROUND BRILLIANT**
 Measurements **4.30 - 4.32 X 2.73 MM**

GRADING RESULTS

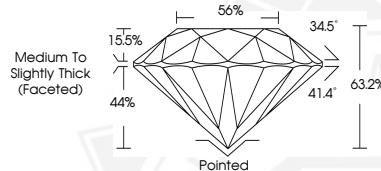
Carat Weight **0.31 CARAT**
 Color Grade **E**
 Clarity Grade **VS 1**
 Cut Grade **EXCELLENT**

ADDITIONAL GRADING INFORMATION

Polish **EXCELLENT**
 Symmetry **EXCELLENT**
 Fluorescence **NONE**
 Inscription(s) **IGI LG772613888**
 Comments: This Laboratory Grown Diamond was created by Chemical Vapor Deposition (CVD) growth process.
 Type IIa



Sample Image Used



February 16, 2026
IGI Report Number LG772613888
ROUND BRILLIANT
LABORATORY GROWN DIAMOND
4.30 - 4.32 X 2.73 MM
 Carat Weight **0.31 CARAT**
 Color Grade **E**
 Clarity Grade **VS 1**
 Cut Grade **EXCELLENT**
 Polish **EXCELLENT**
 Symmetry **EXCELLENT**
 Fluorescence **NONE**
 Inscription(s) **IGI LG772613888**
 Comments: This Laboratory Grown Diamond was created by Chemical Vapor Deposition (CVD) growth process. Type IIa

THIS DOCUMENT WAS PRODUCED WITH THE FOLLOWING SECURITY MEASURES: SPECIAL DOCUMENT PAPER, INK SCREENS, WATERMARK, BACKGROUND DESIGNS, HOLOGRAM AND OTHER SECURITY FEATURES NOT LISTED AND DO EXCEED DOCUMENT SECURITY INDUSTRY GUIDELINES.