



LABORATORY GROWN DIAMOND REPORT

February 13, 2026
 IGI Report Number **LG772613436**
 Description **LABORATORY GROWN DIAMOND**
 Shape and Cutting Style **PEAR BRILLIANT**
 Measurements **7.56 X 5.06 X 3.05 MM**

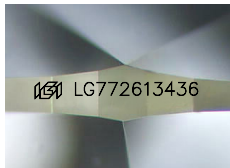
GRADING RESULTS

Carat Weight **0.70 CARAT**
 Color Grade **D**
 Clarity Grade **VS 1**

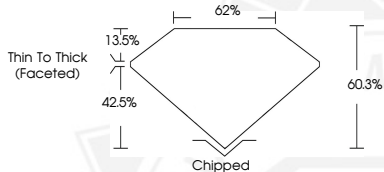
ADDITIONAL GRADING INFORMATION

Polish **GOOD**
 Symmetry **VERY GOOD**
 Fluorescence **NONE**
 Inscription(s) **IGI LG772613436**

Comments: As Grown - No indication of post-growth treatment.
 This Laboratory Grown Diamond was created by High Pressure High Temperature (HPHT) growth process.
 Type II



Sample Image Used



February 13, 2026
 IGI Report Number **LG772613436**
PEAR BRILLIANT
LABORATORY GROWN DIAMOND
7.56 X 5.06 X 3.05 MM
 Carat Weight **0.70 CARAT**
 Color Grade **D**
 Clarity Grade **VS 1**
 Polish **GOOD**
 Symmetry **VERY GOOD**
 Fluorescence **NONE**
 Inscription(s) **IGI LG772613436**

Comments: As Grown - No indication of post-growth treatment. This Laboratory Grown Diamond was created by High Pressure High Temperature (HPHT) growth process. Type II



February 13, 2026
 IGI Report Number **LG772613436**
PEAR BRILLIANT
LABORATORY GROWN DIAMOND
7.56 X 5.06 X 3.05 MM
 Carat Weight **0.70 CARAT**
 Color Grade **D**
 Clarity Grade **VS 1**
 Polish **GOOD**
 Symmetry **VERY GOOD**
 Fluorescence **NONE**
 Inscription(s) **IGI LG772613436**

Comments: As Grown - No indication of post-growth treatment. This Laboratory Grown Diamond was created by High Pressure High Temperature (HPHT) growth process. Type II



THIS DOCUMENT WAS PRODUCED WITH THE FOLLOWING SECURITY MEASURES: SPECIAL DOCUMENT PAPER, INK SCREENS, WATERMARK, BACKGROUND DESIGNS, HOLOGRAM AND OTHER SECURITY FEATURES NOT LISTED AND DO EXCEED DOCUMENT SECURITY INDUSTRY GUIDELINES.