



ELECTRONIC COPY

LG772612156
Report verification at igi.org



February 5, 2026

IGI Report Number **LG772612156**

Description **LABORATORY GROWN DIAMOND**

Shape and Cutting Style **ROUND BRILLIANT**

Measurements **7.31 - 7.35 X 4.57 MM**

GRADING RESULTS

Carat Weight **1.52 CARAT**

Color Grade **D**

Clarity Grade **VVS 2**

Cut Grade **IDEAL**

February 5, 2026

IGI Report Number **LG772612156**

Description **LABORATORY GROWN DIAMOND**

Shape and Cutting Style **ROUND BRILLIANT**

Measurements **7.31 - 7.35 X 4.57 MM**

GRADING RESULTS

Carat Weight **1.52 CARAT**

Color Grade **D**

Clarity Grade **VVS 2**

Cut Grade **IDEAL**

ADDITIONAL GRADING INFORMATION

Polish **EXCELLENT**

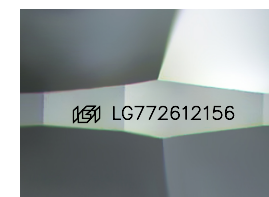
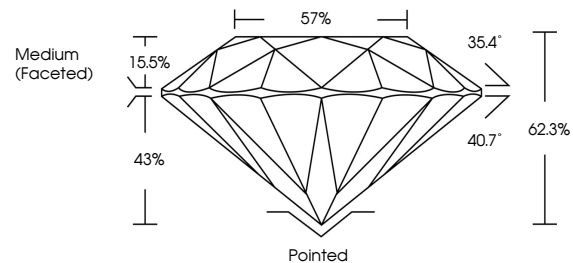
Symmetry **EXCELLENT**

Fluorescence **NONE**

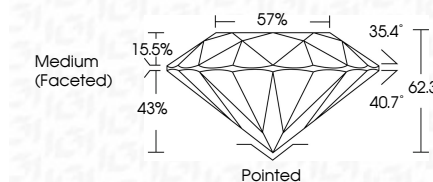
Inscription(s) **LG772612156**

Comments: This Laboratory Grown Diamond was created by Chemical Vapor Deposition (CVD) growth process. Type IIa

PROPORTIONS



Sample Image Used



COLOR

D E F G H I J Faint Very Light Light

CLARITY

FL	IF	VS ¹⁻²	VS ¹⁻²	SI ¹⁻²	I ¹⁻³
Flawless	Internally Flawless	Very Very Slightly Included	Very Slightly Included	Slightly Included	Included

ADDITIONAL GRADING INFORMATION

Polish **EXCELLENT**

Symmetry **EXCELLENT**

Fluorescence **NONE**

Inscription(s) **LG772612156**

Comments: This Laboratory Grown Diamond was created by Chemical Vapor Deposition (CVD) growth process. Type IIa



IGI



February 5, 2026	IGI Report No LG772612156	ROUND BRILLIANT	1.52 CARAT	D	VVS 2	IDEAL	62.3%	57%	Medium (Faceted)	Pointed	EXCELLENT	EXCELLENT	NONE	LG772612156
7.31 - 7.35 X 4.57 MM	Carat Weight	Color Grade	Clarity Grade	Cut Grade	Depth	Table	Girdle	Culet	Polish	Symmetry	Fluorescence	Inscription(s)	Comments: This Laboratory Grown Diamond was created by Chemical Vapor Deposition (CVD) growth process. Type IIa	