



**ELECTRONIC COPY**

LG772610622  
Report verification at igi.org



February 16, 2026

IGI Report Number **LG772610622**

Description **LABORATORY GROWN DIAMOND**

Shape and Cutting Style **ROUND MODIFIED BRILLIANT**

Measurements **6.38 - 6.39 X 3.80 MM**

**GRADING RESULTS**

Carat Weight **1.03 CARAT**

Color Grade **FANCY INTENSE BLUE**

Clarity Grade **VS 1**

February 16, 2026

IGI Report Number **LG772610622**

Description **LABORATORY GROWN DIAMOND**

Shape and Cutting Style **ROUND MODIFIED BRILLIANT**

Measurements **6.38 - 6.39 X 3.80 MM**

**GRADING RESULTS**

Carat Weight **1.03 CARAT**

Color Grade **FANCY INTENSE BLUE**

Clarity Grade **VS 1**

**ADDITIONAL GRADING INFORMATION**

Polish **EXCELLENT**

Symmetry **EXCELLENT**

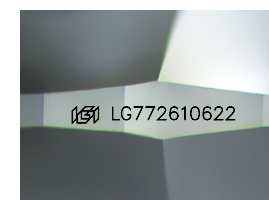
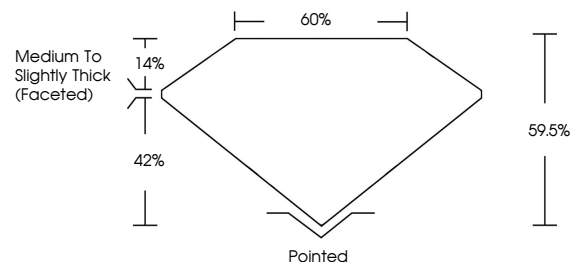
Fluorescence **NONE**

Inscription(s) **IGI LG772610622**

Comments: This Laboratory Grown Diamond was created by Chemical Vapor Deposition (CVD) growth process. Indications of post-growth treatment.

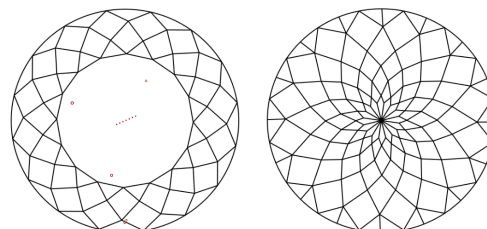
Secondary color: Green

**PROPORTIONS**



Sample Image Used

**CLARITY CHARACTERISTICS**



**KEY TO SYMBOLS**

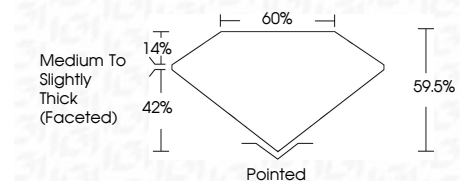
Red symbols indicate internal characteristics.  
Green symbols indicate external characteristics.

**COLOR**

D E F G H I J Faint Very Light Light

**CLARITY**

FL	IF	VS <sup>1-2</sup>	VS <sup>1-2</sup>	SI <sup>1-2</sup>	I <sup>1-3</sup>
Flawless	Internally Flawless	Very Very Slightly Included	Very Slightly Included	Slightly Included	Included



**ADDITIONAL GRADING INFORMATION**

Polish **EXCELLENT**

Symmetry **EXCELLENT**

Fluorescence **NONE**

Inscription(s) **IGI LG772610622**

Comments: This Laboratory Grown Diamond was created by Chemical Vapor Deposition (CVD) growth process. Indications of post-growth treatment.

Secondary color: Green



**IGI**



February 16, 2026  
IGI Report No LG772610622  
**ROUND MODIFIED BRILLIANT**  
6.38 - 6.39 X 3.80 MM  
1.03 CARAT  
FANCY INTENSE BLUE  
VS 1  
60%  
42%  
Medium to Slightly Thick (Faceted)  
Pointed  
EXCELLENT  
EXCELLENT  
NONE  
IGI LG772610622

Comments: This Laboratory Grown Diamond was created by Chemical Vapor Deposition (CVD) growth process. Indications of post-growth treatment. Secondary color: Green