



ELECTRONIC COPY

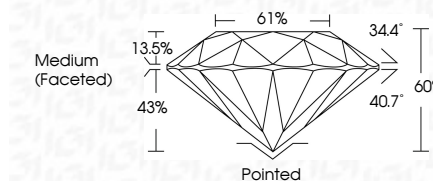
LG772610583
Report verification at igi.org



February 13, 2026
IGI Report Number **LG772610583**
Description **LABORATORY GROWN DIAMOND**
Shape and Cutting Style **ROUND BRILLIANT**
Measurements **6.53 - 6.57 X 3.92 MM**

GRADING RESULTS

Carat Weight **1.03 CARAT**
Color Grade **G**
Clarity Grade **VS 2**
Cut Grade **EXCELLENT**

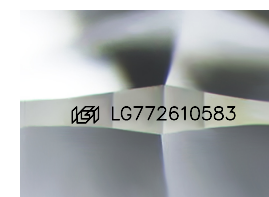


ADDITIONAL GRADING INFORMATION

Polish **EXCELLENT**
Symmetry **EXCELLENT**
Fluorescence **NONE**
Inscription(s) **IGI LG772610583**
Comments: This Laboratory Grown Diamond was created by Chemical Vapor Deposition (CVD) growth process. Type IIa

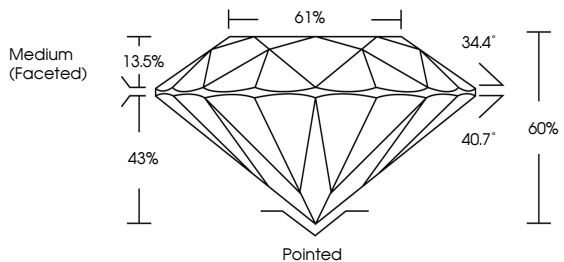


February 13, 2026
IGI Report No LG772610583
ROUND BRILLIANT
6.53 - 6.57 X 3.92 MM
1.03 CARAT
Color Grade **G**
Clarity Grade **VS 2**
Cut Grade **EXCELLENT**
Depth **65%**
Table **61%**
Medium (Faceted)
Culet **Pointed**
Polish **EXCELLENT**
Symmetry **EXCELLENT**
Fluorescence **NONE**
Inscription(s) **IGI LG772610583**
Comments: This Laboratory Grown Diamond was created by Chemical Vapor Deposition (CVD) growth process. Type IIa

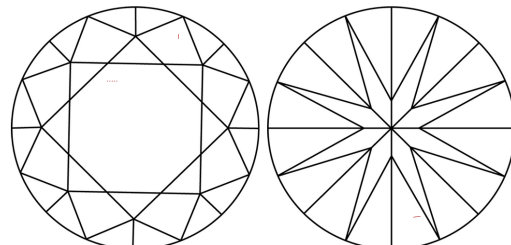


Sample Image Used

PROPORTIONS



CLARITY CHARACTERISTICS



KEY TO SYMBOLS

Red symbols indicate internal characteristics.
Green symbols indicate external characteristics.

COLOR

D	E	F	G	H	I	J	Faint	Very Light	Light
---	---	---	---	---	---	---	-------	------------	-------

CLARITY

FL	IF	VS ¹⁻²	VS ¹⁻²	SI ¹⁻²	I ¹⁻³
Flawless	Internally Flawless	Very Very Slightly Included	Very Slightly Included	Slightly Included	Included

