



**ELECTRONIC COPY**

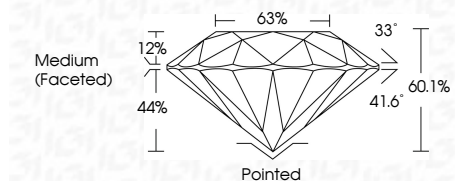
LG772610363  
Report verification at igi.org



February 13, 2026  
IGI Report Number **LG772610363**  
Description **LABORATORY GROWN DIAMOND**  
Shape and Cutting Style **ROUND BRILLIANT**  
Measurements **6.48 - 6.51 X 3.91 MM**

**GRADING RESULTS**

Carat Weight **1.01 CARAT**  
Color Grade **F**  
Clarity Grade **SI 1**  
Cut Grade **EXCELLENT**

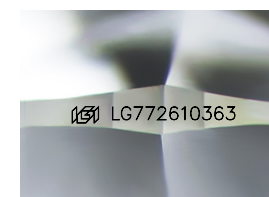


**ADDITIONAL GRADING INFORMATION**

Polish **EXCELLENT**  
Symmetry **EXCELLENT**  
Fluorescence **NONE**  
Inscription(s) **IGI LG772610363**  
Comments: This Laboratory Grown Diamond was created by Chemical Vapor Deposition (CVD) growth process. Type IIa

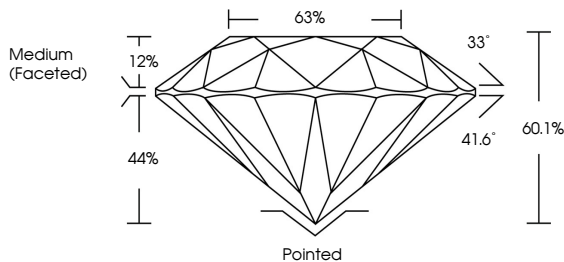


February 13, 2026  
IGI Report No LG772610363  
**ROUND BRILLIANT**  
6.48 - 6.51 X 3.91 MM  
1.01 CARAT  
F  
SI 1  
EXCELLENT  
60.1%  
68%  
Medium (Faceted)  
Pointed  
EXCELLENT  
EXCELLENT  
NONE  
IGI LG772610363  
Comments: This Laboratory Grown Diamond was created by Chemical Vapor Deposition (CVD) growth process. Type IIa

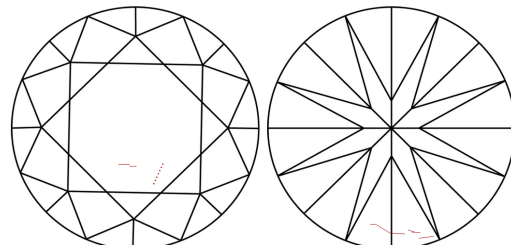


Sample Image Used

**PROPORTIONS**



**CLARITY CHARACTERISTICS**



**KEY TO SYMBOLS**

Red symbols indicate internal characteristics.  
Green symbols indicate external characteristics.

**COLOR**

D	E	F	G	H	I	J	Faint	Very Light	Light
---	---	---	---	---	---	---	-------	------------	-------

**CLARITY**

FL	IF	VS <sup>1-2</sup>	VS <sup>1-2</sup>	SI <sup>1-2</sup>	I <sup>1-3</sup>
Flawless	Internally Flawless	Very Very Slightly Included	Very Slightly Included	Slightly Included	Included

