



ELECTRONIC COPY

LG772606575
Report verification at igi.org



February 12, 2026

IGI Report Number **LG772606575**

Description **LABORATORY GROWN DIAMOND**

Shape and Cutting Style **EMERALD CUT**

Measurements **7.46 X 5.26 X 3.50 MM**

GRADING RESULTS

Carat Weight **1.37 CARAT**

Color Grade **FANCY VIVID BLUE**

Clarity Grade **VS 2**

February 12, 2026

IGI Report Number **LG772606575**

Description **LABORATORY GROWN DIAMOND**

Shape and Cutting Style **EMERALD CUT**

Measurements **7.46 X 5.26 X 3.50 MM**

GRADING RESULTS

Carat Weight **1.37 CARAT**

Color Grade **FANCY VIVID BLUE**

Clarity Grade **VS 2**

ADDITIONAL GRADING INFORMATION

Polish **EXCELLENT**

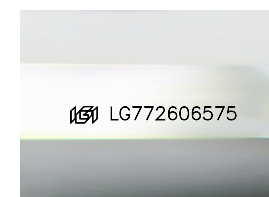
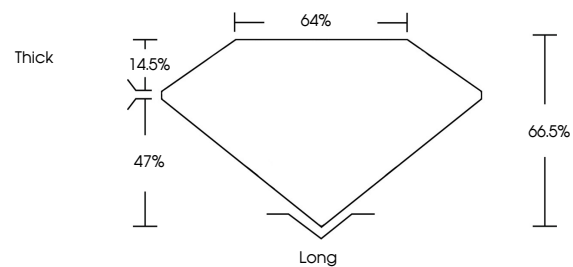
Symmetry **EXCELLENT**

Fluorescence **NONE**

Inscription(s) **IGI LG772606575**

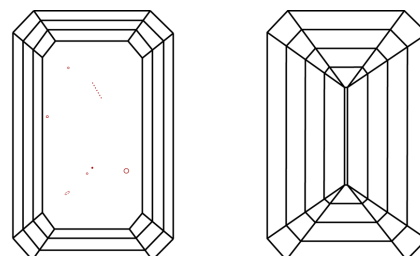
Comments: This Laboratory Grown Diamond was created by Chemical Vapor Deposition (CVD) growth process. Indications of post-growth treatment.

PROPORTIONS



Sample Image Used

CLARITY CHARACTERISTICS



KEY TO SYMBOLS

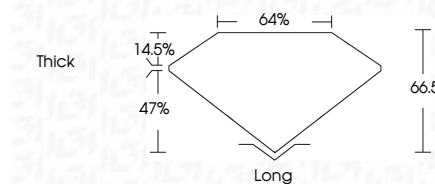
Red symbols indicate internal characteristics.
Green symbols indicate external characteristics.

COLOR

D E F G H I J Faint Very Light Light

CLARITY

FL	IF	VS ¹⁻²	VS ¹⁻²	SI ¹⁻²	I ¹⁻³
Flawless	Internally Flawless	Very Very Slightly Included	Very Slightly Included	Slightly Included	Included



ADDITIONAL GRADING INFORMATION

Polish **EXCELLENT**

Symmetry **EXCELLENT**

Fluorescence **NONE**

Inscription(s) **IGI LG772606575**

Comments: This Laboratory Grown Diamond was created by Chemical Vapor Deposition (CVD) growth process. Indications of post-growth treatment.



IGI



February 12, 2026	1.37 CARAT	Long
IGI Report No LG772606575	FANCY VIVID BLUE	EXCELLENT
EMERALD CUT	VS 2	EXCELLENT
7.46 X 5.26 X 3.50 MM	66.5%	NONE
Carat Weight	64%	IGI LG772606575
Color Grade	Thick	
Clarity Grade		
Depth		
Table		
Girdle		
Culet		
Polish		
Symmetry		
Fluorescence		
Inscription(s)		

Comments: This Laboratory Grown Diamond was created by Chemical Vapor Deposition (CVD) growth process. Indications of post-growth treatment.