



Light Performance Grade: Exceptional



Structured Light Environment Representation



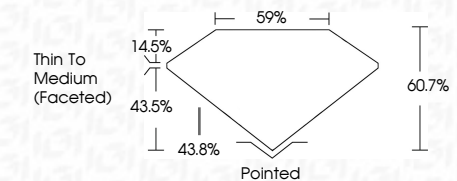
COLOR



CLARITY



February 3, 2026  
IGI Report Number: LG772604008  
Description: LABORATORY GROWN DIAMOND  
Shape and Cutting Style: OVAL BRILLIANT  
Measurements: 12.54 X 8.49 X 5.15 MM  
GRADING RESULTS  
Carat Weight: 3.34 CARATS  
Color Grade: D  
Clarity Grade: VVS 2



ADDITIONAL GRADING INFORMATION  
Polish: EXCELLENT  
Symmetry: EXCELLENT  
Fluorescence: NONE  
Inscription(s): IGI LG772604008  
Comments: This Laboratory Grown Diamond was created by Chemical Vapor Deposition (CVD) growth process. Type IIa



February 3, 2026  
IGI Report No LG772604008  
OVAL BRILLIANT  
12.54 X 8.49 X 5.15 MM  
Carat Weight: 3.34 CARATS  
Color Grade: D  
Clarity Grade: VVS 2  
Depth: 60.7%  
Table: 59%  
Girdle: Thin To Medium (Faceted)  
Culet: Pointed  
Polish: EXCELLENT  
Symmetry: EXCELLENT  
Fluorescence: NONE  
Inscription(s): IGI LG772604008  
Comments: This Laboratory Grown Diamond was created by Chemical Vapor Deposition (CVD) growth process. Type IIa

ELECTRONIC COPY  
LABORATORY GROWN DIAMOND REPORT

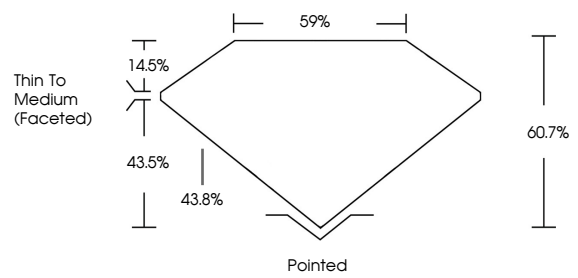
February 3, 2026  
IGI Report Number: LG772604008  
Description: LABORATORY GROWN DIAMOND  
Shape and Cutting Style: OVAL BRILLIANT  
Measurements: 12.54 x 8.49 x 5.15 mm

GRADING RESULTS  
Carat Weight: 3.34 CARATS  
Color Grade: D  
Clarity Grade: VVS 2

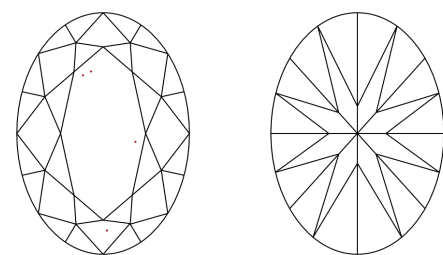
ADDITIONAL GRADING INFORMATION  
Polish: EXCELLENT  
Symmetry: EXCELLENT  
Fluorescence: NONE  
Inscription(s): IGI LG772604008

Comments: This Laboratory Grown Diamond was created by Chemical Vapor Deposition (CVD) growth process. Type IIa

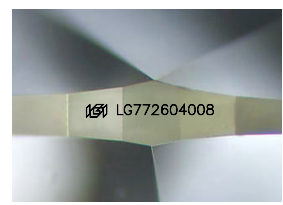
PROPORTIONS



CLARITY CHARACTERISTICS



KEY TO SYMBOLS  
Red symbols indicate internal characteristics.  
Green symbols indicate external characteristics.



Sample Image Used

