



ELECTRONIC COPY

LG771664262
Report verification at igi.org



February 6, 2026

IGI Report Number **LG771664262**

Description **LABORATORY GROWN DIAMOND**

Shape and Cutting Style **ROUND BRILLIANT**

Measurements **9.12 - 9.15 X 5.45 MM**

GRADING RESULTS

Carat Weight **2.79 CARATS**

Color Grade **D**

Clarity Grade **VVS 2**

Cut Grade **IDEAL**

February 6, 2026

IGI Report Number **LG771664262**

Description **LABORATORY GROWN DIAMOND**

Shape and Cutting Style **ROUND BRILLIANT**

Measurements **9.12 - 9.15 X 5.45 MM**

GRADING RESULTS

Carat Weight **2.79 CARATS**

Color Grade **D**

Clarity Grade **VVS 2**

Cut Grade **IDEAL**

ADDITIONAL GRADING INFORMATION

Polish **EXCELLENT**

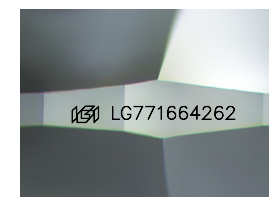
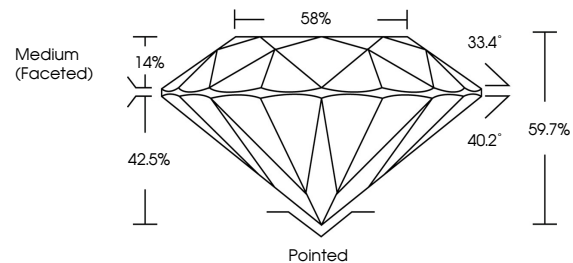
Symmetry **EXCELLENT**

Fluorescence **NONE**

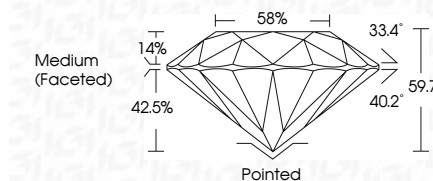
Inscription(s) **LG771664262**

Comments: This Laboratory Grown Diamond was created by Chemical Vapor Deposition (CVD) growth process. Type IIa

PROPORTIONS



Sample Image Used



COLOR

D E F G H I J Faint Very Light Light

CLARITY

| FL | IF | VVS ¹⁻² | VS ¹⁻² | SI ¹⁻² | I ¹⁻³ |
|----------|---------------------|-----------------------------|------------------------|-------------------|------------------|
| Flawless | Internally Flawless | Very Very Slightly Included | Very Slightly Included | Slightly Included | Included |

ADDITIONAL GRADING INFORMATION

Polish **EXCELLENT**

Symmetry **EXCELLENT**

Fluorescence **NONE**

Inscription(s) **LG771664262**

Comments: This Laboratory Grown Diamond was created by Chemical Vapor Deposition (CVD) growth process. Type IIa



IGI



| | | | | | | | | |
|------------------|---------------------------|----------------|-------------|------------------|-----------|-----------|------|-------------|
| February 6, 2026 | IGI Report No LG771664262 | 2.79 CARATS | D | Pointed | EXCELLENT | EXCELLENT | NONE | LG771664262 |
| ROUND BRILLIANT | 9.12 - 9.15 X 5.45 MM | Color Grade | VVS 2 | Medium (Faceted) | IDEAL | EXCELLENT | NONE | |
| | | Clarity Grade | VVS 2 | | 59.7% | | | |
| | | Depth | 59.7% | | | | | |
| | | Table | 14% | | | | | |
| | | Girdle | 58% | | | | | |
| | | Culet | Pointed | | | | | |
| | | Polish | EXCELLENT | | | | | |
| | | Symmetry | EXCELLENT | | | | | |
| | | Fluorescence | NONE | | | | | |
| | | Inscription(s) | LG771664262 | | | | | |

Comments: This Laboratory Grown Diamond was created by Chemical Vapor Deposition (CVD) growth process. Type IIa