



ELECTRONIC COPY

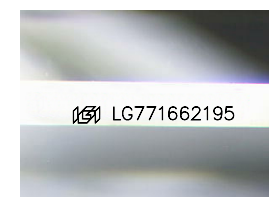
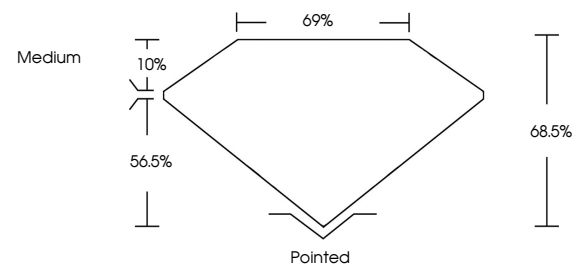
LG771662195
Report verification at igi.org



February 12, 2026
IGI Report Number **LG771662195**
Description **LABORATORY GROWN DIAMOND**
Shape and Cutting Style **PRINCESS CUT**
Measurements **6.10 X 6.06 X 4.15 MM**
GRADING RESULTS
Carat Weight **1.30 CARAT**
Color Grade **FANCY VIVID PINK**
Clarity Grade **VVS 2**

February 12, 2026
IGI Report Number **LG771662195**
Description **LABORATORY GROWN DIAMOND**
Shape and Cutting Style **PRINCESS CUT**
Measurements **6.10 X 6.06 X 4.15 MM**

PROPORTIONS

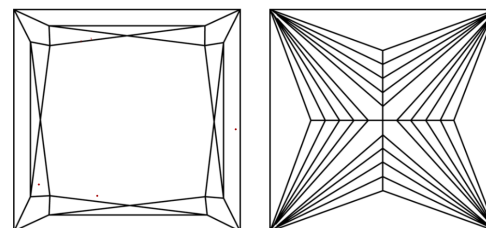


Sample Image Used

GRADING RESULTS

Carat Weight **1.30 CARAT**
Color Grade **FANCY VIVID PINK**
Clarity Grade **VVS 2**

CLARITY CHARACTERISTICS



KEY TO SYMBOLS

Red symbols indicate internal characteristics.
Green symbols indicate external characteristics.

ADDITIONAL GRADING INFORMATION

Polish **VERY GOOD**
Symmetry **VERY GOOD**
Fluorescence **STRONG**
Inscription(s) **IGI LG771662195**

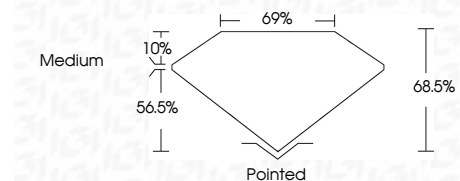
Comments: This Laboratory Grown Diamond was created by Chemical Vapor Deposition (CVD) growth process. Indications of post-growth treatment.

COLOR

D E F G H I J Faint Very Light Light

CLARITY

FL	IF	VVS ¹⁻²	VS ¹⁻²	SI ¹⁻²	I ¹⁻³
Flawless	Internally Flawless	Very Very Slightly Included	Very Slightly Included	Slightly Included	Included



ADDITIONAL GRADING INFORMATION

Polish **VERY GOOD**
Symmetry **VERY GOOD**
Fluorescence **STRONG**
Inscription(s) **IGI LG771662195**
Comments: This Laboratory Grown Diamond was created by Chemical Vapor Deposition (CVD) growth process. Indications of post-growth treatment.



February 12, 2026
IGI Report No LG771662195
PRINCESS CUT
1.30 CARAT
FANCY VIVID PINK
VVS 2
6.10 X 6.06 X 4.15 MM
68.5%
69%
Medium
Pointed
Polish **VERY GOOD**
Symmetry **VERY GOOD**
Fluorescence **STRONG**
Inscription(s) **IGI LG771662195**
Comments: This Laboratory Grown Diamond was created by Chemical Vapor Deposition (CVD) growth process. Indications of post-growth treatment.