



**ELECTRONIC COPY**

LG771660476  
Report verification at igi.org



February 13, 2026

IGI Report Number **LG771660476**

Description **LABORATORY GROWN DIAMOND**

Shape and Cutting Style **ROUND BRILLIANT**

Measurements **8.68 - 8.73 X 5.34 MM**

**GRADING RESULTS**

Carat Weight **2.46 CARATS**

Color Grade **E**

Clarity Grade **VVS 2**

Cut Grade **IDEAL**

February 13, 2026  
IGI Report Number **LG771660476**  
Description **LABORATORY GROWN DIAMOND**  
Shape and Cutting Style **ROUND BRILLIANT**  
Measurements **8.68 - 8.73 X 5.34 MM**

**GRADING RESULTS**

Carat Weight **2.46 CARATS**

Color Grade **E**

Clarity Grade **VVS 2**

Cut Grade **IDEAL**

**ADDITIONAL GRADING INFORMATION**

Polish **EXCELLENT**

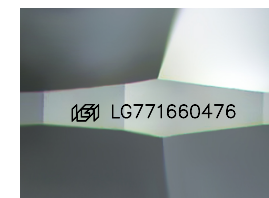
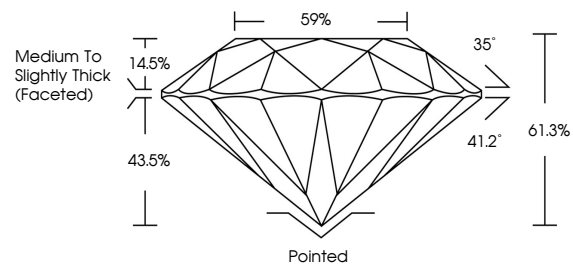
Symmetry **EXCELLENT**

Fluorescence **NONE**

Inscription(s) **IGI LG771660476**

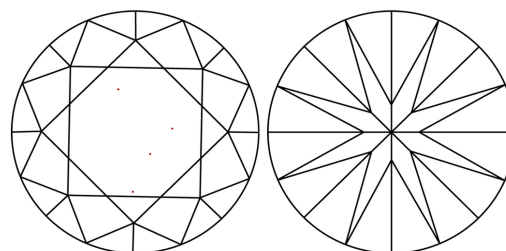
Comments: HEARTS & ARROWS  
This Laboratory Grown Diamond was created by  
Chemical Vapor Deposition (CVD) growth process.  
Type IIa

**PROPORTIONS**



Sample Image Used

**CLARITY CHARACTERISTICS**



**KEY TO SYMBOLS**

Red symbols indicate internal characteristics.  
Green symbols indicate external characteristics.



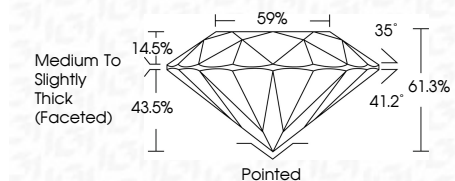
www.igi.org

**COLOR**

D E F G H I J Faint Very Light Light

**CLARITY**

FL	IF	VVS <sup>1-2</sup>	VS <sup>1-2</sup>	SI <sup>1-2</sup>	I <sup>1-3</sup>
Flawless	Internally Flawless	Very Very Slightly Included	Very Slightly Included	Slightly Included	Included



**ADDITIONAL GRADING INFORMATION**

Polish **EXCELLENT**

Symmetry **EXCELLENT**

Fluorescence **NONE**

Inscription(s) **IGI LG771660476**

Comments: HEARTS & ARROWS  
This Laboratory Grown Diamond was created by  
Chemical Vapor Deposition (CVD) growth process.  
Type IIa



February 13, 2026  
IGI Report No LG771660476  
ROUND BRILLIANT

2.46 CARATS  
E

8.68 - 8.73 X 5.34 MM  
VVS 2  
IDEAL  
61.3%  
59%  
Medium To Slightly Thick (Faceted)

Pointed  
EXCELLENT  
EXCELLENT  
NONE  
IGI LG771660476

Cut  
Polish  
Symmetry  
Fluorescence  
Inscriptions(s)

Comments:  
Hearts & Arrows  
This Laboratory Grown Diamond was  
created by Chemical Vapor Deposition  
(CVD) growth process.  
Type IIa