



ELECTRONIC COPY

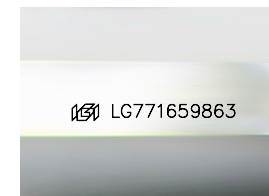
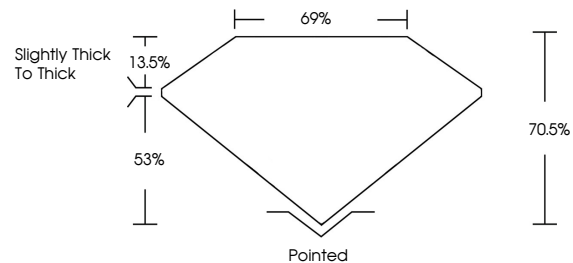
LABORATORY GROWN DIAMOND REPORT

February 13, 2026
IGI Report Number **LG771659863**
Description **LABORATORY GROWN DIAMOND**
Shape and Cutting Style **PRINCESS CUT**
Measurements **9.52 X 9.30 X 6.56 MM**
GRADING RESULTS
Carat Weight **5.24 CARATS**
Color Grade **E**
Clarity Grade **VS 1**

ADDITIONAL GRADING INFORMATION

Polish **EXCELLENT**
Symmetry **EXCELLENT**
Fluorescence **NONE**
Inscription(s) **IGI LG771659863**
Comments: This Laboratory Grown Diamond was created by Chemical Vapor Deposition (CVD) growth process.
Type IIa

PROPORTIONS



Sample Image Used

COLOR

D E F G H I J Faint Very Light Light

CLARITY

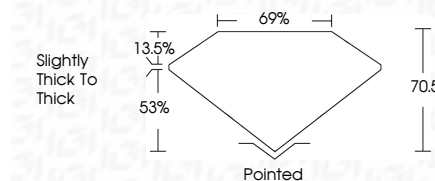
FL	IF	VS ¹⁻²	VS ¹⁻²	SI ¹⁻²	I ¹⁻³
Flawless	Internally Flawless	Very Very Slightly Included	Very Slightly Included	Slightly Included	Included



February 13, 2026
IGI Report Number **LG771659863**
Description **LABORATORY GROWN DIAMOND**
Shape and Cutting Style **PRINCESS CUT**
Measurements **9.52 X 9.30 X 6.56 MM**
GRADING RESULTS
Carat Weight **5.24 CARATS**
Color Grade **E**
Clarity Grade **VS 1**

ADDITIONAL GRADING INFORMATION

Polish **EXCELLENT**
Symmetry **EXCELLENT**
Fluorescence **NONE**
Inscription(s) **IGI LG771659863**
Comments: This Laboratory Grown Diamond was created by Chemical Vapor Deposition (CVD) growth process.
Type IIa



IGI



February 13, 2026
IGI Report No LG771659863
PRINCESS CUT
9.52 X 9.30 X 6.56 MM
5.24 CARATS
E
Color Grade
VS 1
70.5%
69%
Slightly Thick To Thick
Pointed
EXCELLENT
EXCELLENT
NONE
IGI LG771659863
Comments: This Laboratory Grown Diamond was created by Chemical Vapor Deposition (CVD) growth process.
Type IIa